



^{24/7}
Backup Advanced Backup Manager (B247PRO) v9
Microsoft SQL Server Backup and Restore Guide

Copyright Notice

© 2023 Backup247 Pty Ltd. All rights reserved.

The use and copying of this product is subject to a license agreement. Any other use is prohibited. No part of this publication may be reproduced, transmitted, transcribed, stored in a retrieval system, or translated into any language in any form by any means without prior written consent of Backup247 Pty Limited. Information in this manual is subject to change without notice and does not represent a commitment on the part of the vendor, Backup247 Pty Limited does not warrant that this document is error free. If you find any errors in this document, please report to Backup247 Pty Limited in writing.

Trademarks

Backup247, Backup247 Cloud Backup Suite (B247CBS), Backup247 Advanced Backup Suite (B247PRO), Backup247 Offsite Backup Server, Backup247 Standard Backup Suite (B247LITE), Backup247 Replication Server, Backup247 BackupBox Firmware, Backup247 Universal Backup System and Backup247 NAS Client Utility, Backup247 Mobile are trademarks of Backup247 Pty Limited.

Amazon S3 is a registered trademark of Amazon Web Services, Inc., or its affiliates.

Apple and Mac OS X, macOS, and iOS are registered trademarks of Apple Computer, Inc.

Dropbox is a registered trademark of Dropbox Inc.

Google Cloud Storage, Google Drive, Google Authenticator, and Android are registered trademarks of Google Inc.

Backblaze B2 Cloud Storage is a registered trademark of Backblaze Inc.

MariaDB is a registered trademark of MariaDB Corporation AB.

Lotus, Domino, and Notes are registered trademark of IBM Corporation.

Microsoft Windows, Microsoft Exchange Server, Microsoft SQL Server, Microsoft Hyper-V, Microsoft Azure, OneDrive, OneDrive for Business, Microsoft Authenticator, and Microsoft Office 365 are registered trademarks of Microsoft Corporation.

Oracle, Oracle Database, Java and MySQL are registered trademarks of Oracle and/or its affiliates. Other names may be trademarks of their respective owners.

OpenJDK is a registered trademark of Oracle America, Inc.

Rackspace and OpenStack are registered trademarks of Rackspace US, Inc.

Red Hat, Red Hat Enterprise Linux, the Shadowman logo and JBoss are registered trademarks of Red Hat, Inc. www.redhat.com in the U.S. and other countries.

Linux is a registered trademark of Linus Torvalds in the U.S. and other countries.

Ubuntu is a registered trademark of Canonical Ltd.

Debian is a registered trademark of Software in the Public Interest, Inc.

Rocky is a registered trademark of Rocky Brands.

ShadowProtect is a registered trademark of StorageCraft Technology Corporation.

VMware ESXi, vCenter, and vSAN are registered trademarks of VMware, Inc.

All other product names are registered trademarks of their respective owners.

Disclaimer

Backup247 Pty Limited will not have or accept any liability, obligation, or responsibility whatsoever for any loss, destruction or damage (including without limitation consequential loss, destruction or damage) however arising from or in respect of any use or misuse of reliance on this document. By reading and following the instructions in this document, you agree to accept unconditionally the terms of this Disclaimer and as they may be revised and/or amended from time to time by Backup247 Pty Limited without prior notice to you.

Revision History

Date	Descriptions	Version
11 February 2022	▪ Ch. 8 – added migrate data	9.1.0.0

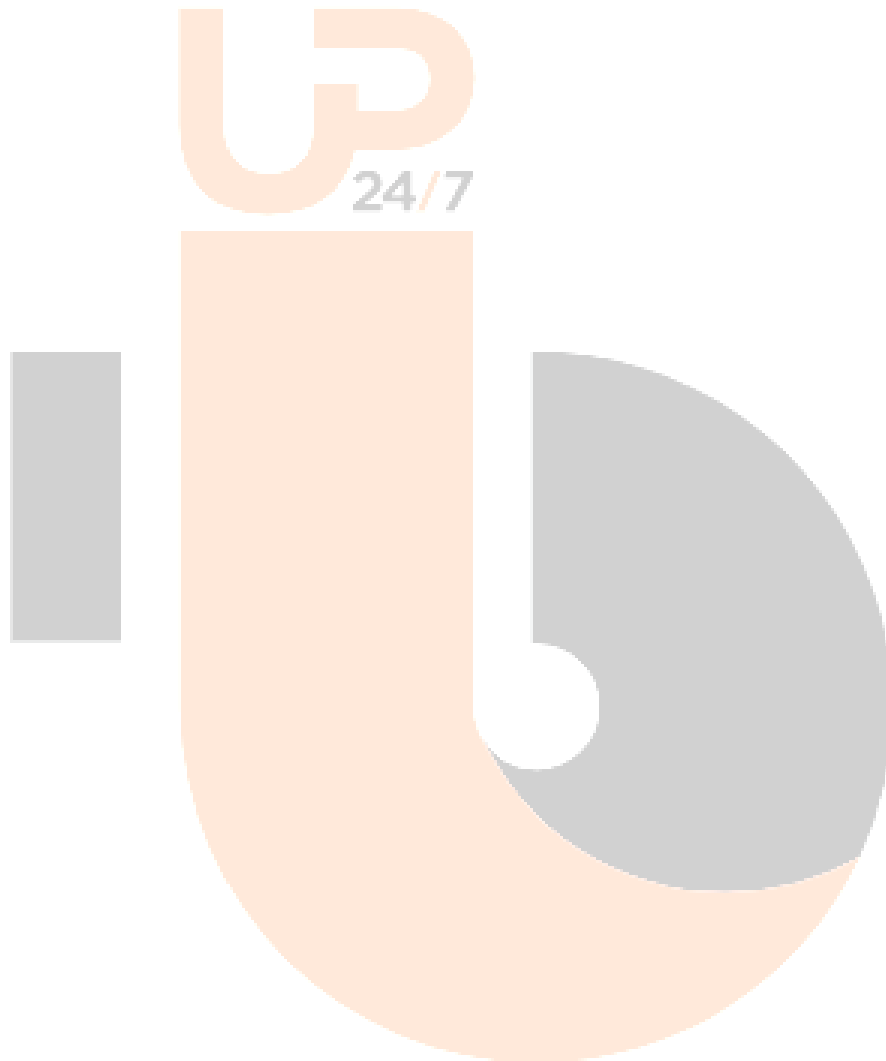


Table of Contents

1	Overview	1
1.1	What is this software?	1
1.2	System Architecture	1
2	Requirements	2
2.1	Hardware Requirement	2
2.2	Software Requirement	2
2.3	Backup247 Advanced Client (B247PRO) Installation	2
2.4	Backup247 Advanced Client (B247PRO) Add-On Module Configuration	2
2.5	Backup Quota Requirement	2
2.6	Java Heap Size	3
2.7	MS SQL Server Registry	3
2.8	SQL Server Services	3
2.9	Transport Layer Security (TLS)	4
2.10	Upgrade VMware Tools Requirement	5
2.11	VSS Backup Mode	6
2.11.1	User Account Privileges	6
2.11.2	Temporary Directory Folder	6
2.11.3	SQL Server VSS Writer	6
2.11.4	MS SQL Server Volumes	7
2.11.5	Windows Services	8
2.11.6	MS SQL Recovery Model	9
2.12	ODBC Backup Mode	9
2.12.1	Temporary Directory Folder	9
2.12.2	Maximum Worker Thread	10
2.12.3	MS SQL Recovery Model	10
2.12.4	ODBC Mode Authentication Methods	10
3	Best Practice and Recommendation	11
3.1	Considerations for Backing up and Restore of System Databases	11
3.1.1	For backup of system databases	11
3.1.2	For restore of system databases	12
3.2	Best Practices and Recommendations	13
4	Limitation	15
4.1	Standalone Environment Only	15
4.2	VSS Backup Mode	15
4.3	File System for Database Snapshot	15
4.4	SQL Server Version	15
4.5	Restoration to Other SQL Server	15

4.6	Remote Machine Backup	15
5	Backup Mode	16
	Comparison between VSS Backup Mode and ODBC Backup Mode	19
6	Overview on the Backup Process	20
6.1	VSS Backup Mode	20
6.2	ODBC Backup Mode	21
7	Performing Backup for Microsoft SQL Server	22
7.1	Creating Backup Set for Microsoft SQL Server	22
7.2	Running Backup Job for Microsoft SQL Server	30
7.3	Configuring Backup Schedule for Automated Backup	34
8	Restoring Backup for Microsoft SQL Server	40
9	Contacting Backup247	46
9.1	Technical Assistance	46
9.2	Documentation	46
Appendix A	Backup Set Type	47
Appendix B	Truncating Transaction Log	49
Appendix C	Cloud Storage as Backup Destination	53
Appendix D	ODBC Mode Authentication Method Permissions Check	54

1 Overview

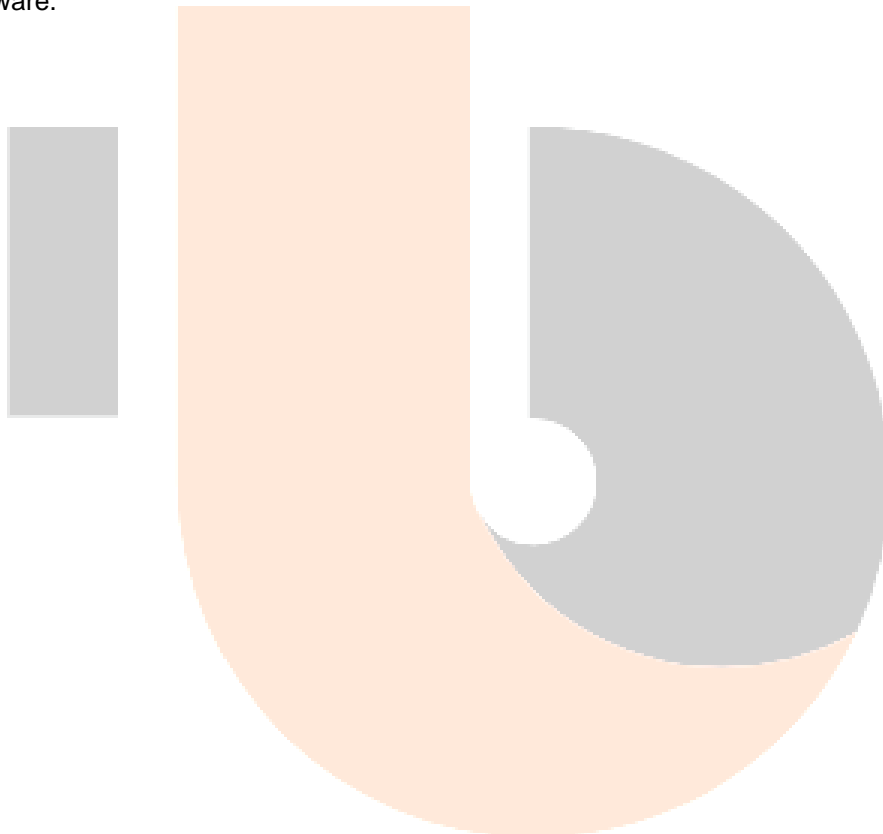
1.1 What is this software?

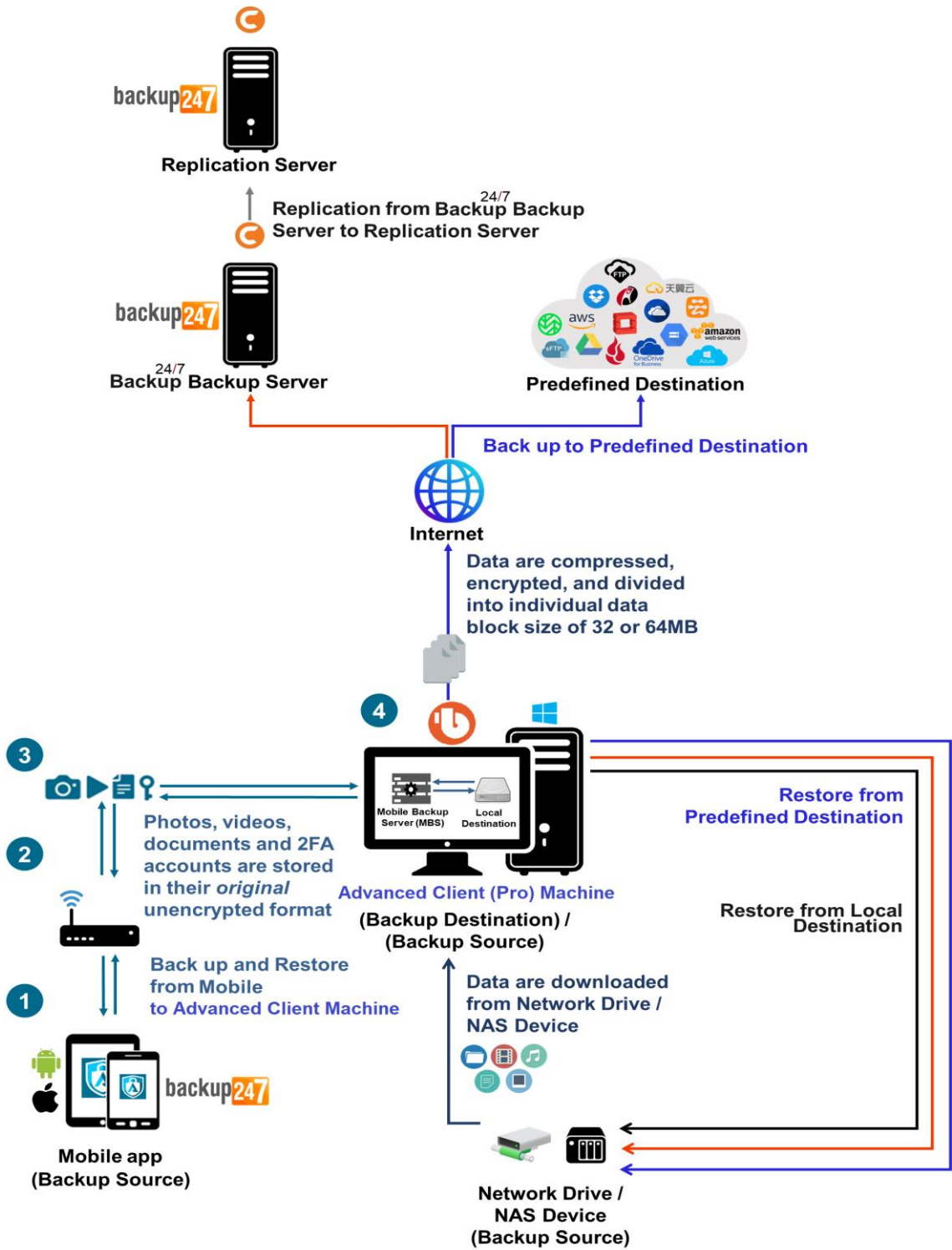
Backup247 brings you specialized client backup software, namely Backup247 Advanced Client (B247PRO), to provide a comprehensive backup solution for your MS SQL Server. The MS SQL Server module of Backup247 Advanced Client (B247PRO) provides you with a set of tools to protect your MS SQL Server, whether in VSS backup mode or ODBC backup mode.

1.2 System Architecture

Below is the system architecture diagram illustrating the major elements involved in the backup process among the MS SQL server, Backup247 Advanced Client (B247PRO) and B247CBS.

In this user guide, we will focus on the software installation, as well as the end-to-end backup and restore process using the Backup247 Advanced Client (B247PRO) as a client backup software.





2 Requirements

You are strongly recommended to configure or check all the requirements below before you proceed with the MS SQL server backup and restoration.

2.1 Hardware Requirement

Refer to the following article for the list of hardware requirements for Backup247 Advanced Client (B247PRO): [FAQ: Backup247 Hardware Requirement List \(HRL\) for version 9.1 or above](#)

2.2 Software Requirement

Refer to the following article for the list of compatible operating systems and application versions: [FAQ: Backup247 Software Compatibility List \(SCL\) for version 9.1 or above](#)

2.3 Backup247 Advanced Client (B247PRO) Installation

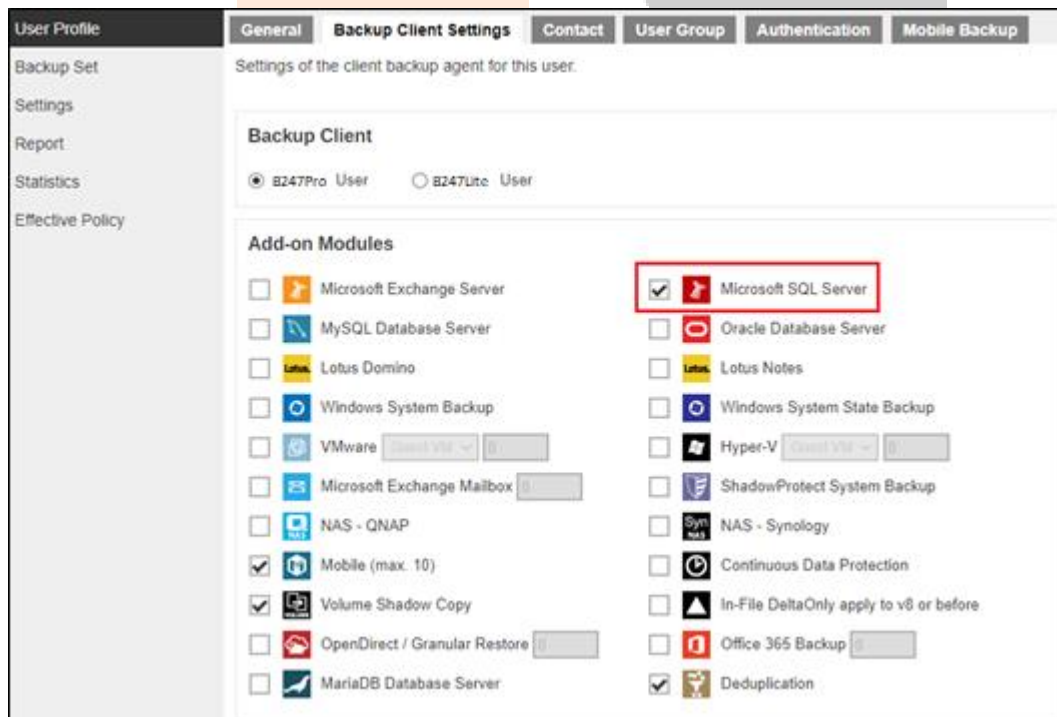
Make sure the latest version of Backup247 Advanced Client (B247PRO) is installed directly on the machine where the MS SQL Server database(s) are hosted.

NOTE

Backup and restore of MS SQL Server database(s) running on a remote machine is not supported.

2.4 Backup247 Advanced Client (B247PRO) Add-On Module Configuration

Make sure the Microsoft SQL Server feature has been enabled as an add-on module in your Backup247 Advanced Client (B247PRO) user account. Contact your backup service provider for more details.



2.5 Backup Quota Requirement

Make sure that your Backup247 Advanced Client (B247PRO) user account has sufficient storage quota assigned to accommodate the storage of MS SQL Server backup set and retention policy.

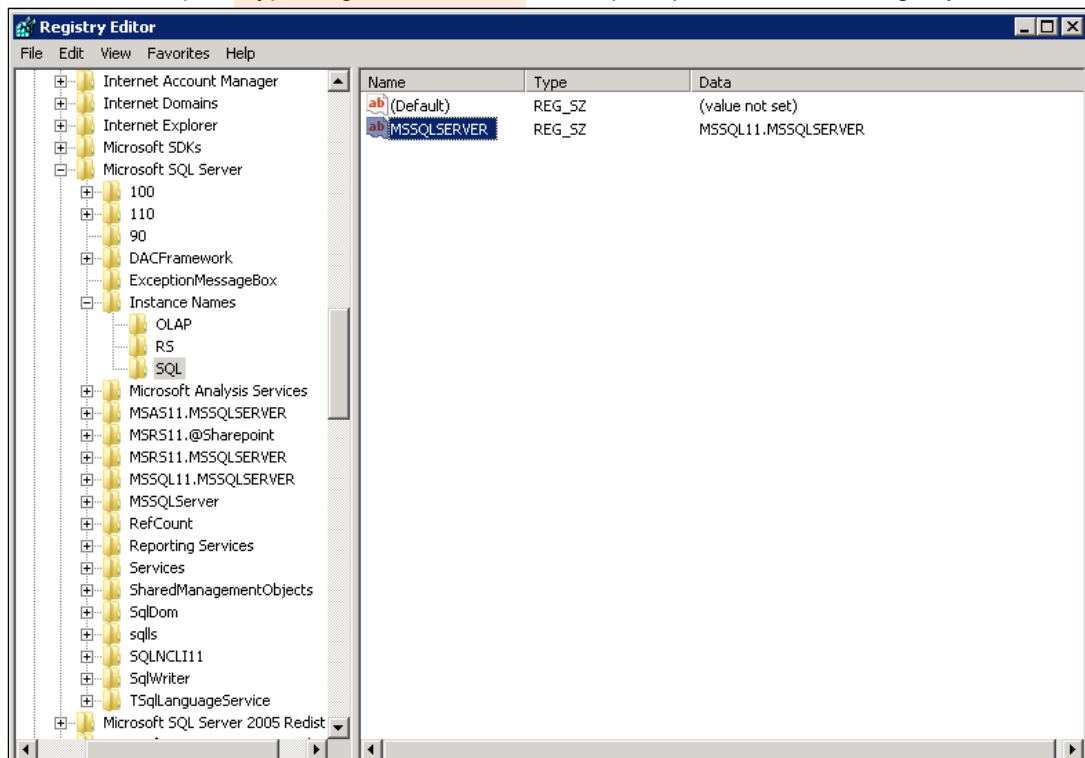
2.6 Java Heap Size

The default Java heap size setting on Backup247 Advanced Client (B247PRO) is 2048MB. For MS SQL Server backup it is highly recommended to increase the Java heap size setting to be at least 4096MB to improve backup and restore performance. The actual heap size is dependent on the amount of free memory available on your MS SQL server.

2.7 MS SQL Server Registry

Make sure the MS SQL entry is present in the registry key "HKEY_LOCAL_MACHINE\SOFTWARE\Microsoft\Microsoft SQL Server\Instance Names\SQL".

To access this path, type "regedit" in the command prompt to launch the Registry Editor.



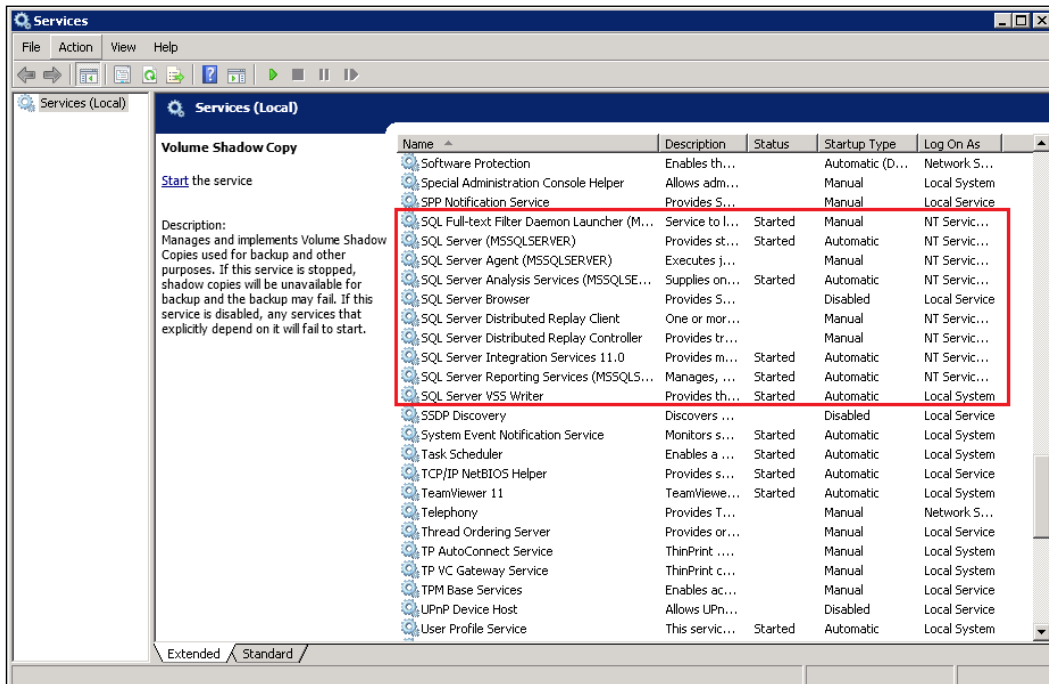
NOTE

Pay extra attention when you are checking configuration in Registry Editor. Any unauthorized changes could cause interruption to the Windows operation.

2.8 SQL Server Services

Ensure that the following SQL Server Services have been enabled in the Windows Services menu.

Launch **Services** in Windows by clicking **Start** then typing “Services” in the search box. All MS SQL server related services should be started by default. If in case it is not, turn it on by right clicking the item then selecting **Start**.



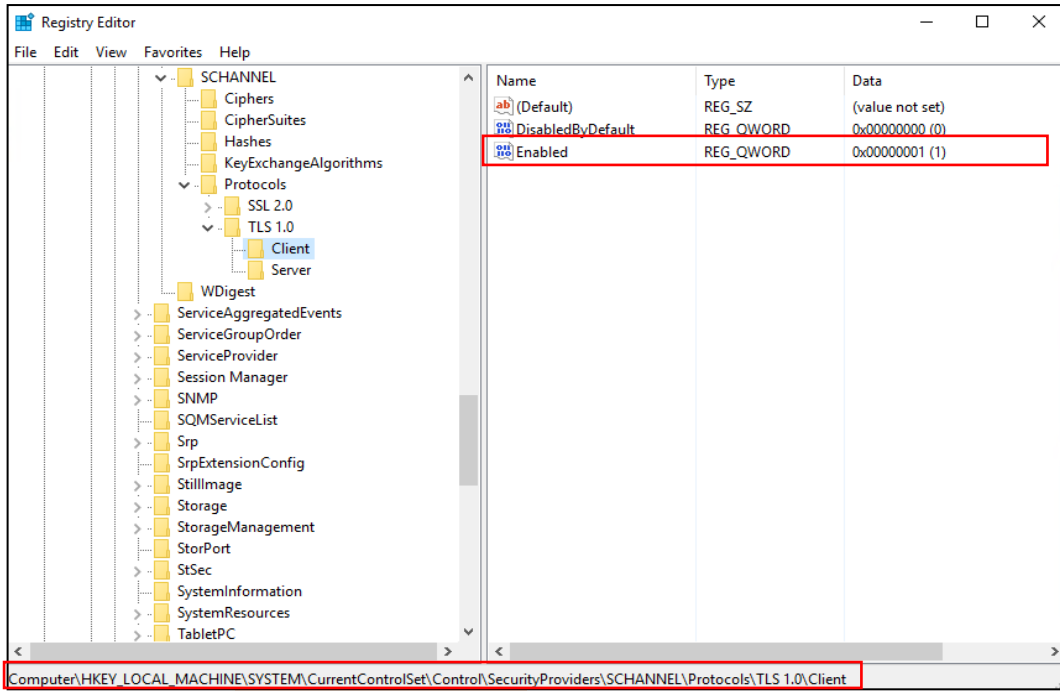
2.9 Transport Layer Security (TLS)

For MS SQL Server 2005, 2008, 2012, and 2014 VSS and ODBC backup modes, TLS version 1.0 must be enabled as only TLS version 1.0 is supported.

To check if TLS 1.0 is enabled on the MS SQL machine, launch the registry editor and locate the following path:

“HKEY_LOCAL_MACHINE\SYSTEM\CurrentControlSet\Control\SecurityProviders\SCHANNEL\Protocols\TLS 1.0\Client”

The value of registry key should be “1” to indicate that TLS 1.0 is enabled.

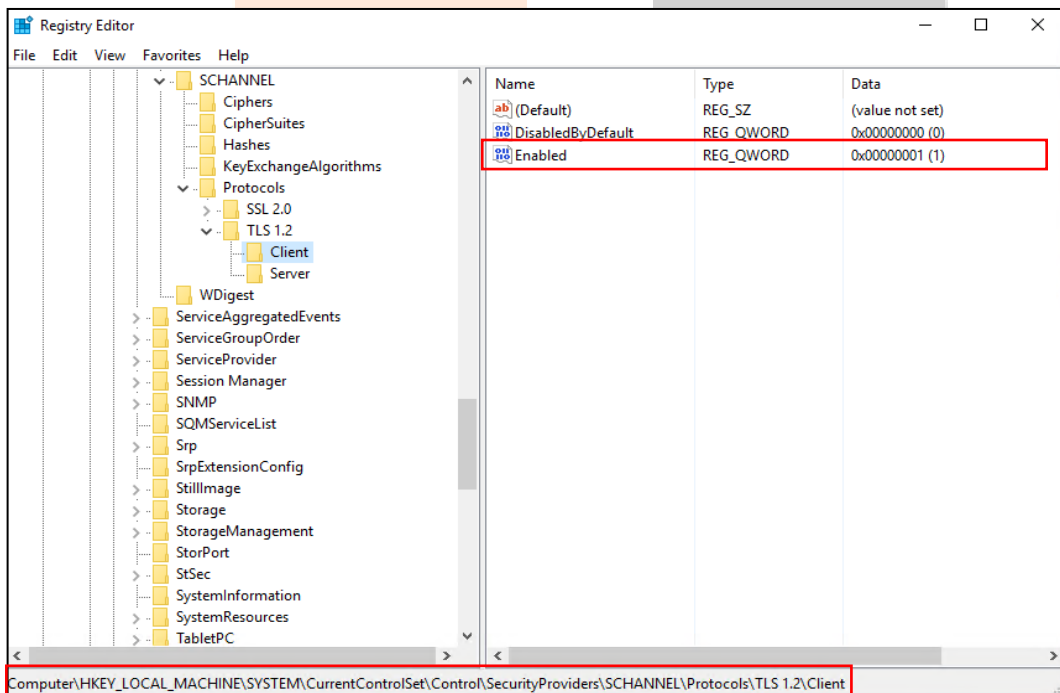


Meanwhile, for MS SQL Server 2016, 2017 and 2019 VSS and ODBC backup modes, TLS version 1.2 must be enabled as only TLS version 1.2 is supported.

To check if TLS 1.2 is enabled on the MS SQL machine, launch the registry editor and locate the following path:

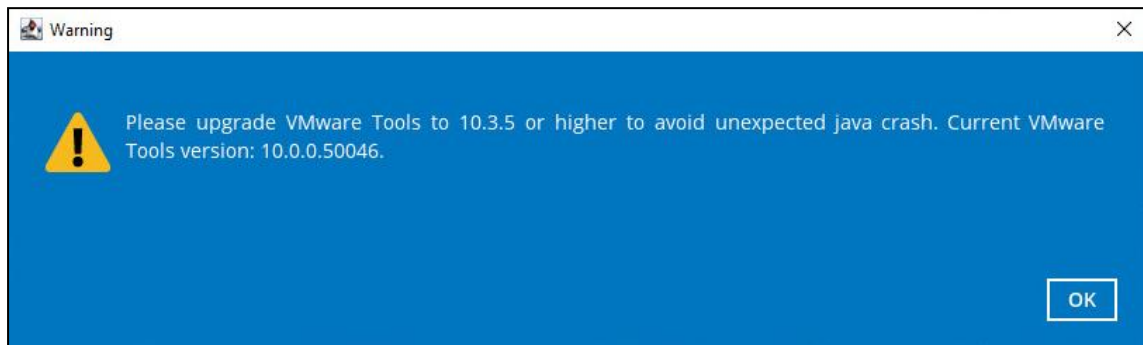
“HKEY_LOCAL_MACHINE\SYSTEM\CurrentControlSet\Control\SecurityProviders\SCHANNEL\Protocols\TLS 1.2\Client”

The value of registry key should be “1” to indicate that TLS 1.2 is enabled.



2.10 Upgrade VMware Tools Requirement

To avoid unexpected java crash, if the Windows machine is a guest VM hosted on a VMware Host then it is highly recommended that the VMware tools version installed on the guest VM must be 10.0.5 or above. Below is the warning message that will be displayed if the version of the VMware Tools is less than 10.0.5.



NOTE

For more information about the upgrade of VMware Tools, refer to the following article:
ISSUE: Backup247 Advanced Client (B247PRO) / B247LITE crash when performing backup or restore on a VMware virtual machine with VMware Tools pre-10.3.5 installed.

Backup247 Advanced Client (B247PRO) supports two backup modes when creating a backup set for MS SQL server: VSS mode and ODBC mode.

2.11 VSS Backup Mode

The VSS-based backup utilizing the Microsoft SQL Server VSS Writer to obtain a consistent snapshot of the MS SQL databases, no spooling / staging of database file(s) is required during the backup process.

2.11.1 User Account Privileges

Make sure the operating system account that performs the backup and restore has sufficient permission to access both SQL server and VSS.

2.11.2 Temporary Directory Folder

- The temporary directory folder is used by Backup247 Advanced Client (B247PRO) for storing backup set index files and incremental/differential delta files. To ensure optimal backup/restoration performance, it is recommended that the temporary directory folder to be set to a local drive. The temporary folder should not be located on Windows system partition or the database partition to minimize any potential performance impact on Windows or database.
- It is recommended that the temporary directory folder should have at least free disk space of 50% of the total database size because the default Delta ratio is 50%. The actual free disk space required depends on various factors including the size of the database, number of backup destinations, backup frequency, in-file delta settings etc.
- The SQL Windows service must have read and write permission to the temporary directory.

2.11.3 SQL Server VSS Writer

Make sure the **SqlServerWriter** has been installed and running on the SQL server, and the writer state is **Stable**. This can be verified by running the “**vssadmin list writers**” command in the Windows Command Prompt.

If you do not find the SqlServerWriter in the result, make sure the SQL Server VSS Writer has been started by following the instructions in Windows Services section below.

Example:

```
C:\Users\Administrator>vssadmin list writers
vssadmin 1.1 - Volume Shadow Copy Service administrative command-
line tool
(C) Copyright 2001-2013 Microsoft Corp.

Writer name: 'Task Scheduler Writer'
  Writer Id: {d61d61c8-d73a-4eee-8cdd-f6f9786b7124}
  Writer Instance Id: {1bddd48e-5052-49db-9b07-b96f96727e6b}
  State: [1] Stable
  Last error: No error

Writer name: 'VSS Metadata Store Writer'
  Writer Id: {75dfb225-e2e4-4d39-9ac9-ffaff65ddf06}
  Writer Instance Id: {088e7a7d-09a8-4cc6-a609-ad90e75ddc93}
  State: [1] Stable
  Last error: No error

Writer name: 'Performance Counters Writer'
  Writer Id: {0badalde-01a9-4625-8278-69e735f39dd2}
  Writer Instance Id: {f0086dda-9efc-47c5-8eb6-a944c3d09381}
  State: [1] Stable
  Last error: No error

Writer name: 'SqlServerWriter'
  Writer Id: {a65faa63-5ea8-4ebc-9dbd-a0c4db26912a}
  Writer Instance Id: {3de4f842-4d57-4198-9949-3b3f8c2629dc}
  State: [1] Stable
  Last error: No error

Writer name: 'System Writer'
  Writer Id: {e8132975-6f93-4464-a53e-1050253ae220}
  Writer Instance Id: {32d2fccc-624f-4baa-beb3-17b27fcae9ee}
  State: [1] Stable
  Last error: No error

Writer name: 'ASR Writer'
  Writer Id: {be000cbe-11fe-4426-9c58-531aa6355fc4}
  Writer Instance Id: {e8580fb0-b51f-40ab-91bf-4eff5107c4d1}
  State: [1] Stable
  Last error: No error

Writer name: 'WMI Writer'
  Writer Id: {a6ad56c2-b509-4e6c-bb19-49d8f43532f0}
  Writer Instance Id: {de1b6322-1d96-4f85-adbf-05cb517322ea}
  State: [1] Stable
  Last error: No error

Writer name: 'BITS Writer'
  Writer Id: {4969d978-be47-48b0-b100-f328f07ac1e0}
  Writer Instance Id: {a623b49f-a3d4-42d2-af9a-4e924fb31262}
  State: [1] Stable
```

```

Last error: No error

Writer name: 'Registry Writer'
  Writer Id: {afbab4a2-367d-4d15-a586-71dbb18f8485}
  Writer Instance Id: {cc6b42f1-ebd0-429f-b3d3-e860905d40d3}
  State: [1] Stable
  Last error: No error

Writer name: 'Shadow Copy Optimization Writer'
  Writer Id: {4dc3bdd4-ab48-4d07-adb0-3bee2926fd7f}
  Writer Instance Id: {957ff981-d54f-4a1f-8798-bd9bd76396bd}
  State: [1] Stable
  Last error: No error

Writer name: 'COM+ REGDB Writer'
  Writer Id: {542da469-d3e1-473c-9f4f-7847f01fc64f}
  Writer Instance Id: {801fea63-6bfc-406d-9a40-4ad5af484773}
  State: [1] Stable
  Last error: No error
  
```

2.11.4 MS SQL Server Volumes

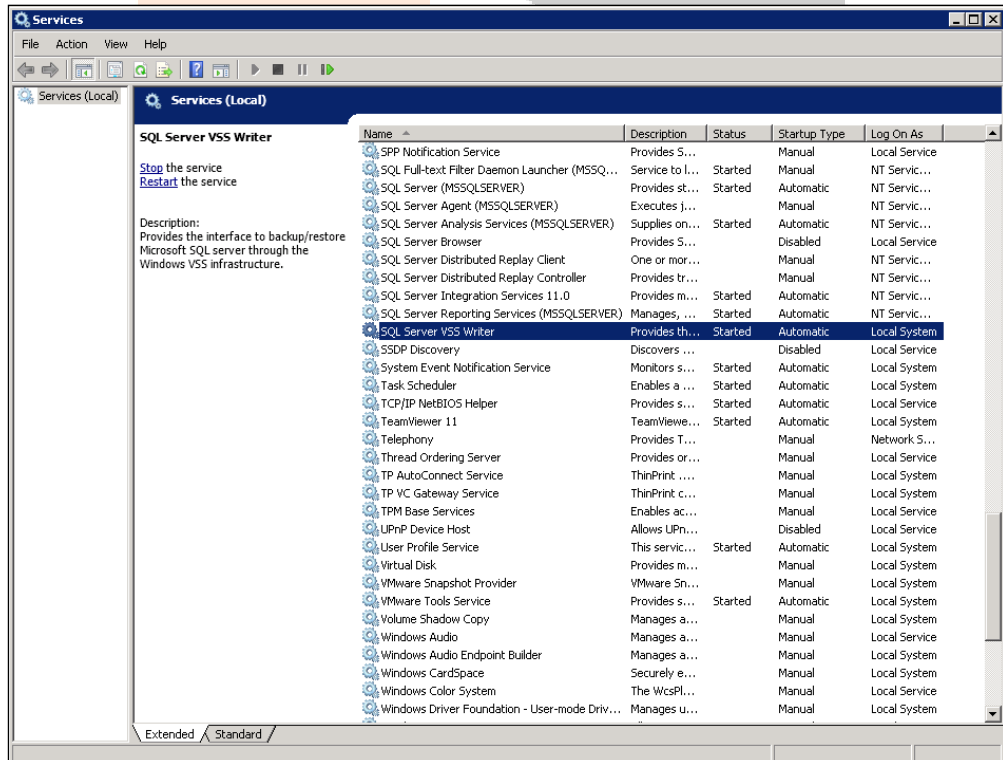
MS SQL Server volumes must use a file system which supports the use of VSS snapshot, for example NTFS.

2.11.5 Windows Services

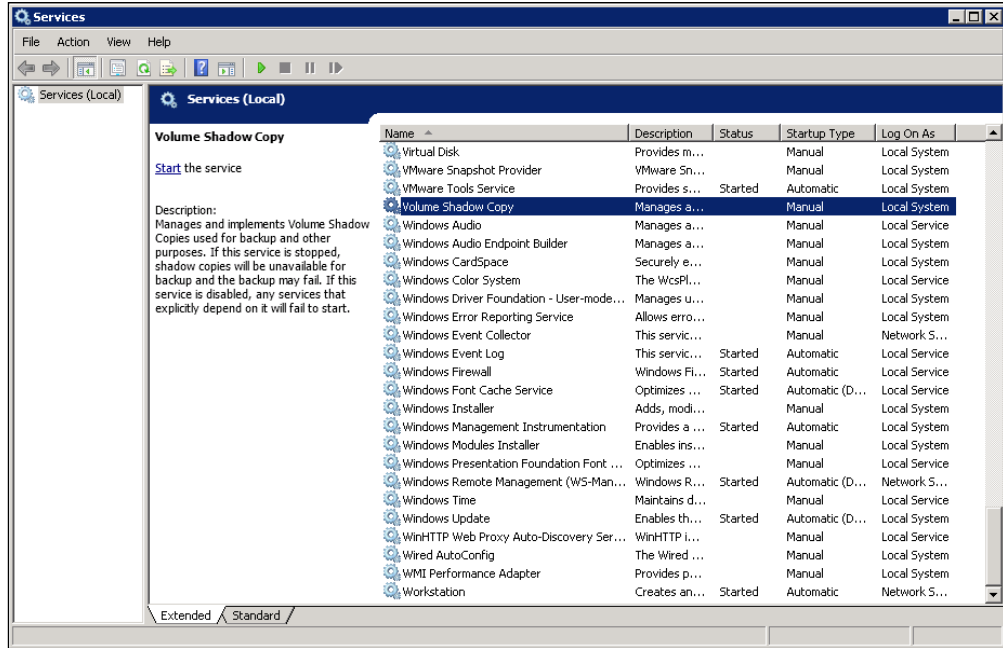
Ensure that the following services have been enabled in the Windows Services menu.

Launch **Services** in Windows by clicking **Start** then typing “Services” in the search box. All MS SQL server related services should be started by default, in case if it is not, turn it on by right clicking the item then selecting **Start**.

1. SQL Server VSS Writer



2. Volume Shadow Copy



2.11.6 MS SQL Recovery Model

VSS backup mode does not support backup of transaction log files, but for databases configured in either Full or Bulk-logging recovery model, this may eventually result in transaction logs filling up the available disk space on the volume of the MS SQL Server.

<https://technet.microsoft.com/en-us/library/cc966520.aspx>

To prevent this from occurring, you can modify the recovery model of database selected for backup to Simple.

Alternatively, to truncate the transaction log files, you can perform a transaction log backup manually (with the instruction provided in Appendix B) or create an additional MS SQL database backup set in ODBC backup mode to perform a transaction log backup.

Please refer to ODBC Backup Mode for further details.

2.12 ODBC Backup Mode

2.12.1 Temporary Directory Folder

- The temporary directory folder is used by Backup247 Advanced Client (B247PRO) for storing the database files, incremental/differential delta files and backup set index files. To ensure optimal backup/restoration performance, it is recommended that the temporary directory folder is set to a local drive.
- The temporary folder should not be located on Windows system partition or the database partition to minimize any potential performance impact on Windows or database. If the temporary directory folder is located on a network drive, make sure the login account has sufficient permission to access the network resources.
- Please refer to the following URL for more details:
<https://support.microsoft.com/en-us/help/2926557/sql-server-vdi-backup-and-restore-operations-require-sysadmin-privileg>
<https://technet.microsoft.com/en-us/library/cc966520.aspx>
- It is recommended that the temporary directory folder should have at least free disk space of 150% of the total database size. The actual free disk space required depends on various factors including the size of the database, number of backup destinations, backup frequency, in-file delta settings etc.

NOTE

To determine if the drive for temporary folder has enough disk space to accommodate the spooling of the database(s) in ODBC backup mode, please refer to Appendix E.

- The SQL Windows service must have read and write permission to the temporary directory.

2.12.2 Maximum Worker Thread

For SQL instance with large number of database (more than 500 databases), consider increasing the “Maximum Worker Thread” setting. Refer to the article below for further details.

<https://docs.microsoft.com/en-us/sql/database-engine/configure-windows/configure-the-max-worker-threads-server-configuration-option>

2.12.3 MS SQL Recovery Model

ODBC backup mode supports transaction log backup for database with Full recovery model.

- For database with Simple recovery mode, only full database and differential database backups can be performed.

<https://docs.microsoft.com/en-us/sql/relational-databases/backup-restore/recovery-models-sql-server>

- To perform a transaction log backup, please change the recovery model of corresponding databases from Simple to Full.

<https://docs.microsoft.com/en-us/sql/relational-databases/backup-restore/view-or-change-the-recovery-model-of-a-database-sql-server>

2.12.4 ODBC Mode Authentication Methods

ODBC backup mode supports two types authentication method:

- Trusted Authentication

This is the default authentication method in the MS SQL Server. When using this method, MS SQL Server uses the Windows login account to authenticate the login to the MS SQL Server.

- MS SQL Authentication

When using this method, the username and password are created and stored in the MS SQL Server.

For details on how to verify if the login credentials you intend to use to authenticate the MS SQL Server backup job on Backup247 Advanced Client (B247PRO) has the correct permissions, and to determine if the drive for temporary folder has enough disk space to accommodate the spooling of the database(s), please refer to Appendix D.

NOTE

It is recommended to use the Trusted Authentication method wherever possible as this type of method is tightly integrated with Windows which has an integrated security. MS SQL Server trusts the credentials provided by Windows as Windows authentication uses a series of encrypted messages to authenticate users in the MS SQL Server.

However, when MS SQL Server logins are used, MS SQL Server login names and encrypted passwords are passed across the network, which makes them less secure.

3 Best Practice and Recommendation

3.1 Considerations for Backing up and Restore of System Databases

Refer to the following tables for considerations for backup and restoration of system databases.

3.1.1 For backup of system databases

SQL server maintains a set of system level database which are essential for the operation of the server instance.

Several of the system databases must be backed up after every significant update, they include:

1. **master**
2. **model**
3. **msdb**
4. **distribution** (for SQL database with replication enabled only)

This table summarizes all of the system databases.

System	Description	Backup	Suggestion
master	The database that records all of the system level information of a SQL server system.	Yes	To back up any database, the instance of SQL server must be running. Startup of an instance of SQL server requires that the master database is accessible and at least partly usable. Back up the master database as often as necessary to protect the data sufficiently for your business needs. Microsoft recommends a regular backup schedule, which you can supplement with manual backup after any substantial update.
model	The template for all databases that are created on the instance of SQL server.	Yes	Backup the model database only when necessary, for example, after customizing its database options. Microsoft recommends that you create only full database backups of model, as required. Because model is small and rarely changes, backing up the log is unnecessary.
msdb	The msdb database is used by SQL Server Agent for	Yes	Back up the msdb whenever it is updated.

	scheduling alerts and jobs, and for recording operators. It also contains history tables (e.g. backup / restore history table).		
tempdb	A workspace for holding temporary or intermediate result sets. This database is recreated every time an instance of SQL server is started.	No	The tempdb system database cannot be backed up.
distribution	The distribution database exists only if the server is configured as a replication distributor. It stores metadata and history data for all types of replication, and transactions for transactional replication.	Yes	Replicated databases and their associated system databases should be backed up regularly.

3.1.2 For restore of system databases

System database	Restoration suggestion
master	To restore any database, the instance of SQL server must be running. Startup of an instance of SQL server requires that the master database is accessible and at least partly usable. Restore or rebuild the master database completely if master becomes unusable.
model	Restore the model database if: <ul style="list-style-type: none"> ➤ The master database has been rebuilt. ➤ The model database has been damaged, for example due to media failure. ➤ The model database has been modified, in this case, it is necessary to restore model from a backup when you rebuild master, because the Rebuild Master utility deletes and recreates model.
msdb	Restore the msdb database if the master database has been rebuilt.
distribution	For restore strategies of distribution database, please refer to the following online document from Microsoft for more details: http://msdn.microsoft.com/enus/library/ms152560.aspx

3.2 Best Practices and Recommendations

The following are some best practices and recommendations we strongly recommend you follow before you start any MS SQL Server backup and restore.

1. For VSS backup mode, it is suggested to set the backup schedule to a time when system activity is low to achieve the best possible performance.
2. It is recommended to use ODBC backup mode for backup of database with a high volume of transaction, since such setup may require frequent backups. Transaction log backup (which is only supported by ODBC backup mode) can be performed periodically and is less resource intensive than VSS based backup.
3. For maximum data protection and restore options, it is recommended to configure:
 - i. At least one offsite or cloud destination
 - ii. At least one local destination for fast recovery
4. Perform test restores periodically to ensure your backup is set up and performed properly. Performing recovery test can also help identify potential issues or gaps in your recovery plan. It is important that you do not try to make the test easier, as the objective of a successful test is not to demonstrate that everything is flawless. There might be flaws identified in the plan throughout the test and it is important to identify those flaws.
5. The Restore Raw File option is for advanced MS SQL Server administrator and should only be used if you have in-depth knowledge and understanding of your MS SQL Server, otherwise, it is not recommended to use this option as there are additional MS SQL techniques required to perform the manual restore.
6. To ensure an optimal backup/restoration performance, it is highly recommended to set the temporary directory folder to a location with sufficient free disk space. It must be on another location other than Drive C: (e.g. Drive E:).
7. The periodic backup schedule should be reviewed regularly to ensure that the interval is sufficient to handle the data volume on the machine. Over time, data usage pattern may change on a production server, i.e. the number of new files created, the number of files which are updated/deleted, and new users may be added etc.

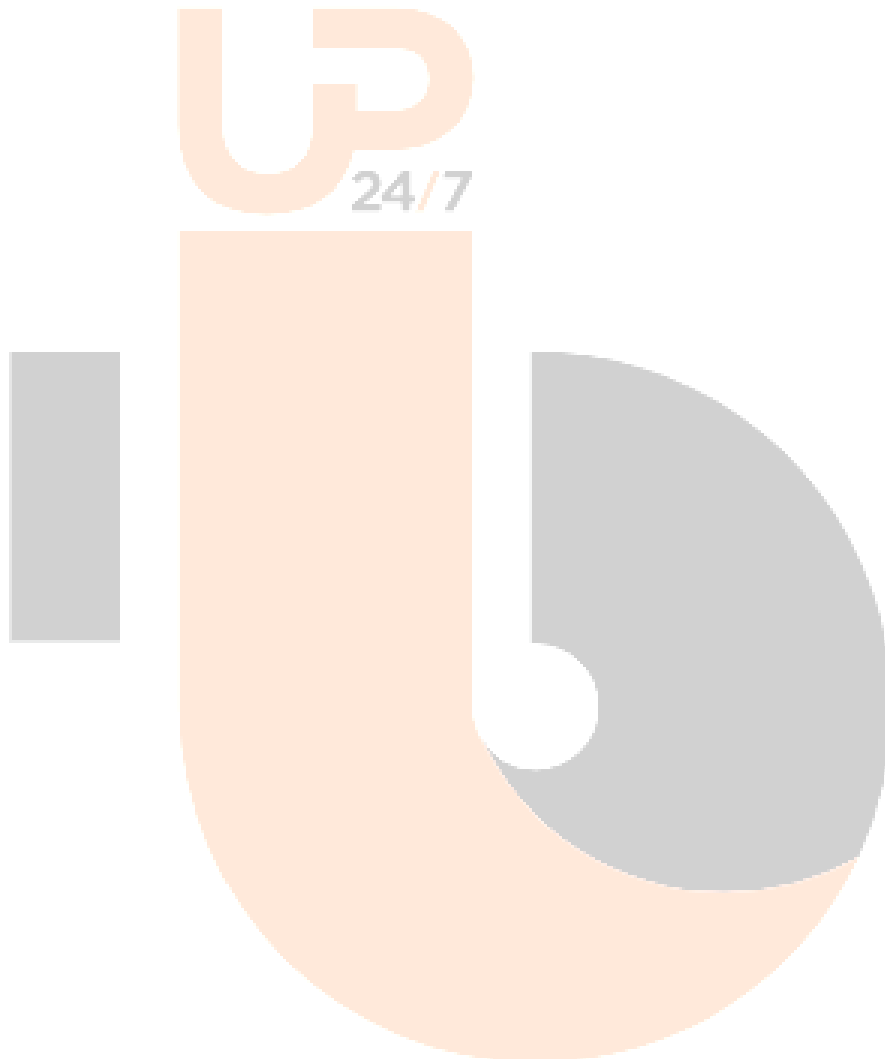
Consider the following key points to efficiently handle backup sets with periodic backup schedule.

- Hardware – to achieve optimal performance, compatible hardware requirements is a must. Ensure you have the backup machine's appropriate hardware specifications to accommodate frequency of backups,
 - so that the data is always backed up within the periodic backup interval
 - so that the backup frequency does not affect the performance of the production server
- Network – make sure to have enough network bandwidth to accommodate the volume of data within the backup interval.

- Retention Policy - also make sure to consider the retention policy settings and retention area storage management which can grow because of the changes in the backup data for each backup job.

NOTE

Make sure that the latest version of Backup247 Advanced Client (B247PRO) is installed directly on the MS SQL server as the backup of MS SQL server databases running on a remote machine is not supported.



4 Limitation

4.1 Standalone Environment Only

Backup247 Advanced Client (B247PRO) does not support backup of MS SQL server in cluster environment, only standalone environment is supported.

4.2 VSS Backup Mode

1. Only support backup of database on local drive. Database on network drive is not supported. For backup of database on a network drive, it is recommended to use ODBC backup mode instead.
2. VSS backup mode does not support transaction log backup, therefore, transaction log backup will have to be done manually. Or you can choose ODBC backup mode for transaction log backup.
3. In order to truncate transaction logs, you have to perform a manual log truncation, which could be time consuming.

4.3 File System for Database Snapshot

You cannot create database snapshots on FAT32 file system or RAW partitions. The sparse files used by database snapshots are provided by the NTFS file system.

4.4 SQL Server Version

1. **Automated Restore Option**
If you have chosen the automated restoration to the Original SQL server or Alternate SQL server of your selection, the restoration can only be done in a SQL server version that is the same as the one used for performing the backup.
2. **Manual Raw file Restore Option**
If you have chosen to restore the raw file, the raw database file(s) can be manually restored to the same or newer SQL server version that you used to perform the backup.

4.5 Restoration to Other SQL Server

1. If you would like to restore database to an alternate SQL server, you can only choose to restore one database to restore at a time.
2. If you would like to restore database to an alternate SQL server, make sure you choose to restore raw file by enabling the checkbox **Restore raw file**.

4.6 Remote Machine Backup

MS SQL server databases backup running on a remote machine is not supported. Ensure that the latest version of Backup247 Advanced Client (B247PRO) is installed directly on the MS SQL server.

5 Backup Mode

You can choose from one of the two backup modes when creating a backup set for MS SQL server. The information below provides you with more details on each backup mode.

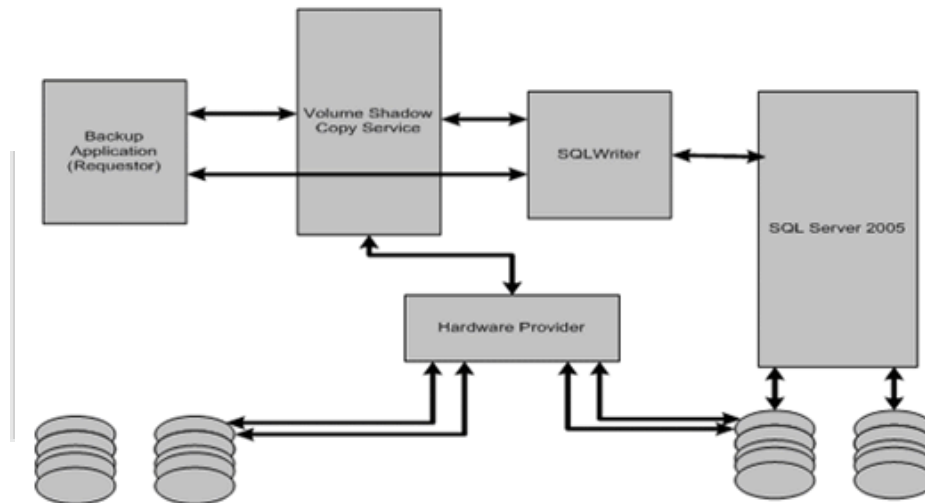
NOTE

For MS SQL server backup sets which are upgraded from v6, the default backup mode will be ODBC.

VSS Mode

Introduction

VSS-based backup utilizing the Microsoft SQL Server VSS Writer to obtain a consistent snapshot of the MS SQL databases, no spooling / staging of database file(s) is required during the backup process.



(Diagram from Microsoft)

Temporary Folder Requirement

Location for temporary folder

The temporary directory folder is used by Backup247 Advanced Client (B247PRO) for storing backup set index files and incremental/differential delta files. To ensure optimal backup/restoration performance, it is recommended that the temporary directory folder is set to a local drive. The temporary folder should not be located on Windows system partition or the database partition to minimize any potential performance impact on Windows and or database.

Temporary folder capacity

With VSS-based backup, the disk space of the temporary folder required for storing the VSS image is significantly smaller than using the ODBC spooling backup method. As the extra space is not required to hold the full database.

It is recommended that the temporary directory should have at least free disk space of 50% of the total database size. The rationale behind this recommended free disk space is the default in-file delta ratio settings is 50%, therefore Backup247 Advanced Client (B247PRO) could generate incremental or differential delta file(s) of up to 50% of the total database

size. The actual free disk space required depends on various factors including the size of the database, number of backup destinations, backup frequency, in-file delta settings etc.

Pros

➤ **Fast and minimal interruption**

The database snapshot capture process is fast and can take place on a running server, as you may continue to work when the snapshot capturing is taking place, there may be another process that holds your input in some memory section until the snapshot capture is completed. That said, the whole snapshot capture is fast, so there is no need for you to stop working and it causes minimal interruption to your business operation.

➤ **Significantly lesser disk burden**

VSS Snapshot typically requires much less additional disk space than clones which is the traditional backup method by spooling database into the temporary folder. Oftentimes, the capacity of the database to back up is huge and therefore the temporary folder would overload with the equal or even larger disk space if traditional backup method is used. By utilizing the VSS technology, it helps your system greatly reduce disk capacity burden and promote optimized performance.

Cons

➤ **No Transaction Log Backup**

MS SQL does not support transaction log backup when VSS is used, therefore, transaction log backup will have to be done manually.

➤ **Workaround is time consuming**

In order to truncate the transaction logs, you have to either change the Recovery model to Simple or perform a manual log truncation, which could be time consuming.

Transaction Log Handling

VSS based backup no longer requires backup of the transaction log files, however for databases configured in either full or bulk-logging recovery model, this may eventually result in transaction logs filling up the available disk space on the volume of the MS SQL Server.

<https://technet.microsoft.com/en-us/library/cc966520.aspx>.

To prevent this from occurring, it is recommended to change the recovery model of database selected for backup to simple recovery model.

Refer to the following steps for details:

1. In SQL Server Management Studio, expand **Databases**, select a user database, or expand **System Databases** and select a system database.
2. Right-click the corresponding database, then click **Properties** to open the **Database Properties** dialog box.
3. In the **Select a page** pane, click **Options**.
4. The current recovery model is displayed in the **Recovery model** list box. Modify the recovery model by selecting **Simple** from the model list.

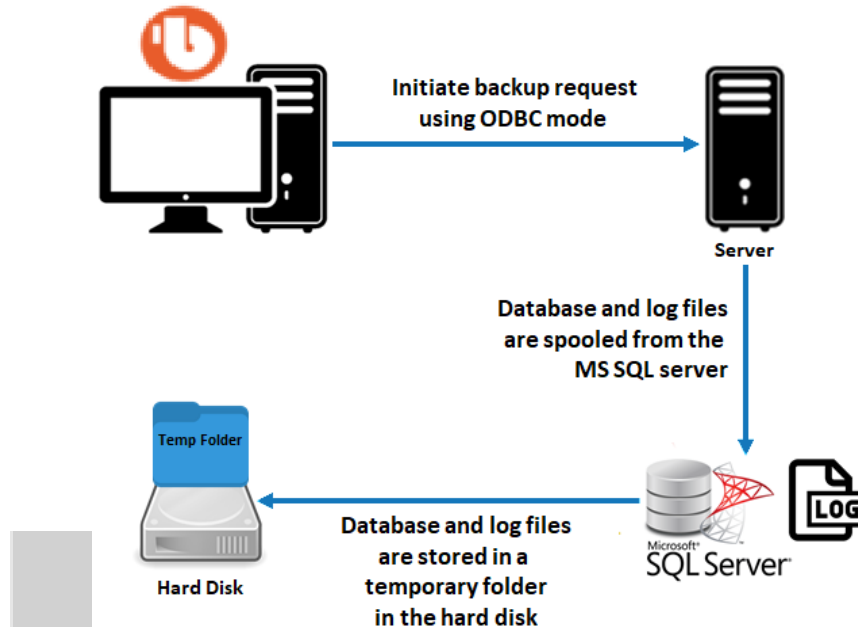
Important: Only modify the recovery model of a live database during low activities hour. It is also recommended to perform a full backup before changing the recovery model.

For MS SQL Server setups where you cannot modify the recovery model of the database, please refer to Appendix B for details on how to truncate transaction log (e.g. perform a transaction log backup manually).

ODBC Mode

Introduction

By using the ODBC mode for MS SQL backup, database files are spooled to a temporary directory before being uploaded to the backup destination.



Temporary Folder Requirement

Location for temporary folder

The temporary directory folder is used by Backup247 Advanced Client (B247PRO) for storing; the database files, incremental/differential delta files, and backup set index files. To ensure optimal backup/restoration performance, it is recommended that the temporary directory folder is set to a local drive. The temporary folder should not be located on Windows system partition or the database partition to minimize any potential performance impact on Windows and or database.

Temporary folder capacity

ODBC backup requires a significantly larger disk space of temporary folder as it need to store the database files spooled during the backup process.

It is recommended that the temporary directory have disk space of at least 150% of the total database size. For each database backup, Backup247 Advanced Client (B247PRO) will spool the database files to the temporary directory before they are uploaded to the backup destination. Also, additional space is required for in-file delta generation the default in-file delta ratio settings is 50%, therefore Backup247 Advanced Client (B247PRO) could generate incremental or differential delta file(s) of up to 50% of the total database size. The actual disk space required depends on various factors, including the size of the database, number of backup destinations, backup frequency, in-file delta settings etc.

Pros

Support Automated Transaction Logs Backup

Schedule backup of transaction log can be configured so that the transaction logs can be backed up periodically and the transaction logs are truncated automatically after each backup job.

<ul style="list-style-type: none"> ➤ <u>Support Point in Time Recovery</u> The ability to restore to a point in time for all of your transaction log backups. ➤ <u>Support Backup of High Transaction Databases</u> For databases which supports a high number of transaction which may require frequent backups. Transaction log backups at regular intervals are more suitable and less resource intensive than VSS based backups, i.e. transaction log backup every 60 minutes, 30 minutes, 15 minutes etc. depending on the database transaction volume.
Cons
<ul style="list-style-type: none"> ➤ <u>Large disk space required</u> Since the database files will be spooled to a temporary folder before uploading to backup destination, investment on hard disk could be high if your MS SQL database size is large. ➤ <u>Slower backup process</u> By utilizing the conventional spooling method, it could take a long time to back up the database and the speed is subject to various factors, including database size, network transfer speed, backup frequency, etc.

Comparison between VSS Backup Mode and ODBC Backup Mode

Description	VSS Backup Mode	ODBC Backup Mode
Support database backup using VSS snapshot	✓	✗
Requires larger temporary folder capacity for storing spooled databases and log files	✗	✓
Requires spooling / staging of database file(s) for backup	✗	✓
Support Transaction log backup	✗	✓
Support backup of databases located on a network drive	✗	✓

6 Overview on the Backup Process

The following steps are performed during a MS SQL Server backup job in VSS and ODBC Backup Modes.

6.1 VSS Backup Mode

For an overview of the detailed process for Steps 3, 5, 12, and 14, please refer to Chapter 12 of the Backup247 Advanced Client (B247PRO) v9 Quick Start Guide for Windows.

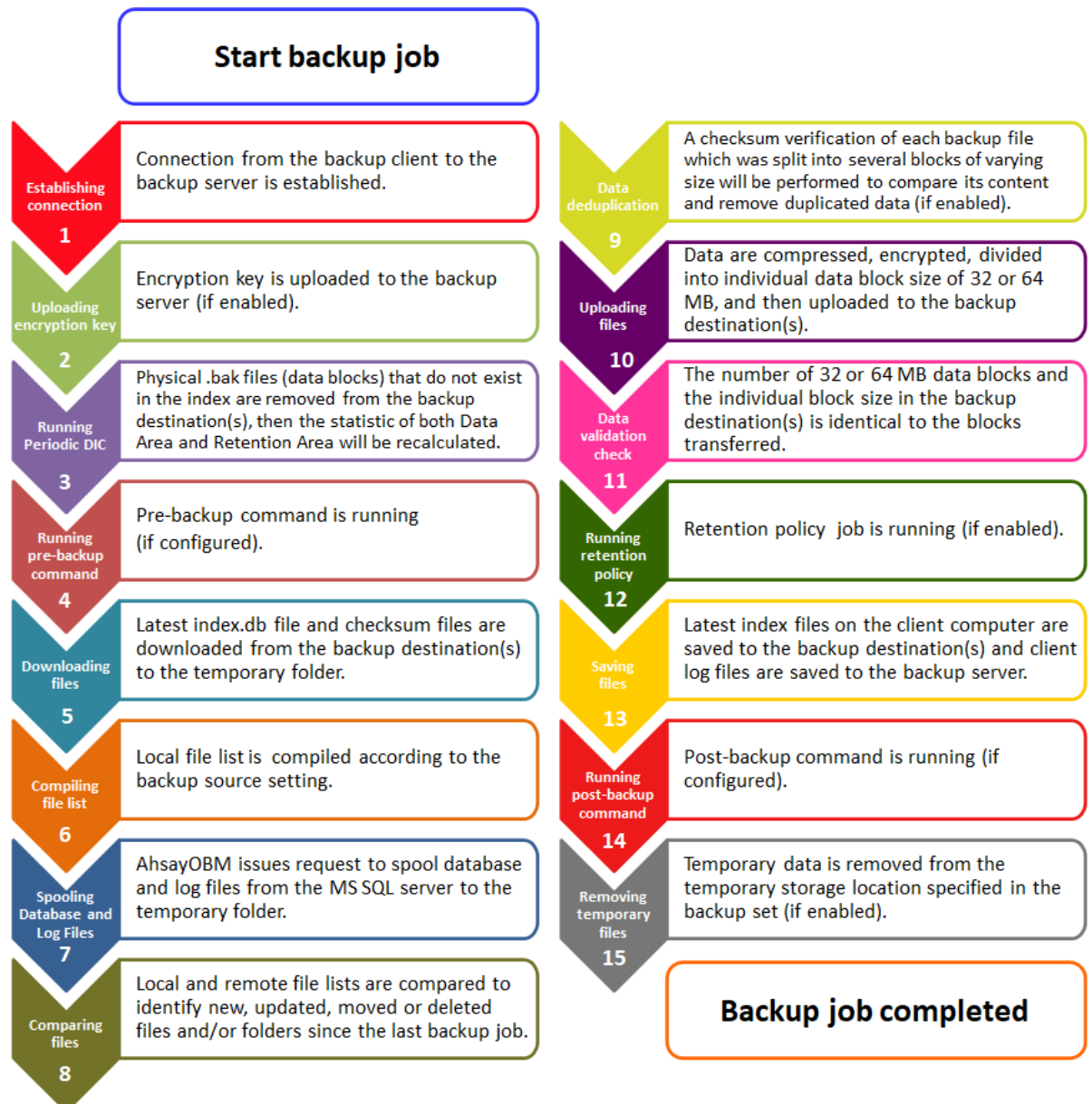
- ▶ Periodic Data Integrity Check (PDIC) Process (**Step 3**)
- ▶ Backup Set Index Handling Process
 - Start Backup Job (**Step 5**)
 - Completed Backup Job (**Step 14**)
- ▶ Data Validation Check (**Step 12**)



6.2 ODBC Backup Mode

For an overview of the detailed process for Steps 3, 5, 11, and 13, please refer to Chapter 12 of the Backup247 Advanced Client (B247PRO) v9 Quick Start Guide for Windows.

- ▶ Periodic Data Integrity Check (PDIC) Process (**Step 3**)
- ▶ Backup Set Index Handling Process
 - Start Backup Job (**Step 5**)
 - Completed Backup Job (**Step 13**)
- ▶ Data Validation Check (**Step 11**)



7 Performing Backup for Microsoft SQL Server

7.1 Creating Backup Set for Microsoft SQL Server

1. Click the **Backup Sets** icon on the main interface of Backup247 Advanced Client (B247PRO).



2. Create a new backup set by clicking the “+” icon next to **Add new backup set**.
3. Select the Backup set type as **MS SQL Server Backup**.
 - **Name** – enter a meaningful backup set name
 - **Backup mode** – choose between VSS mode and ODBC mode. Refer to the Backup Mode section for details on the differences between the two modes.
 - **Server** - Backup247 Advanced Client (B247PRO) supports backup of multiple SQL instance in one backup set. In this Server drop-down menu, you can choose to back up multiple SQL instances or a specific instance of your choice.
 - **Login** - Enter the login ID for the chosen instance.
 - **Password** – Enter the password for the chosen instance.

Click **Next** to proceed when you are done with the settings.

Create Backup Set

Name

Backup set type

Backup mode

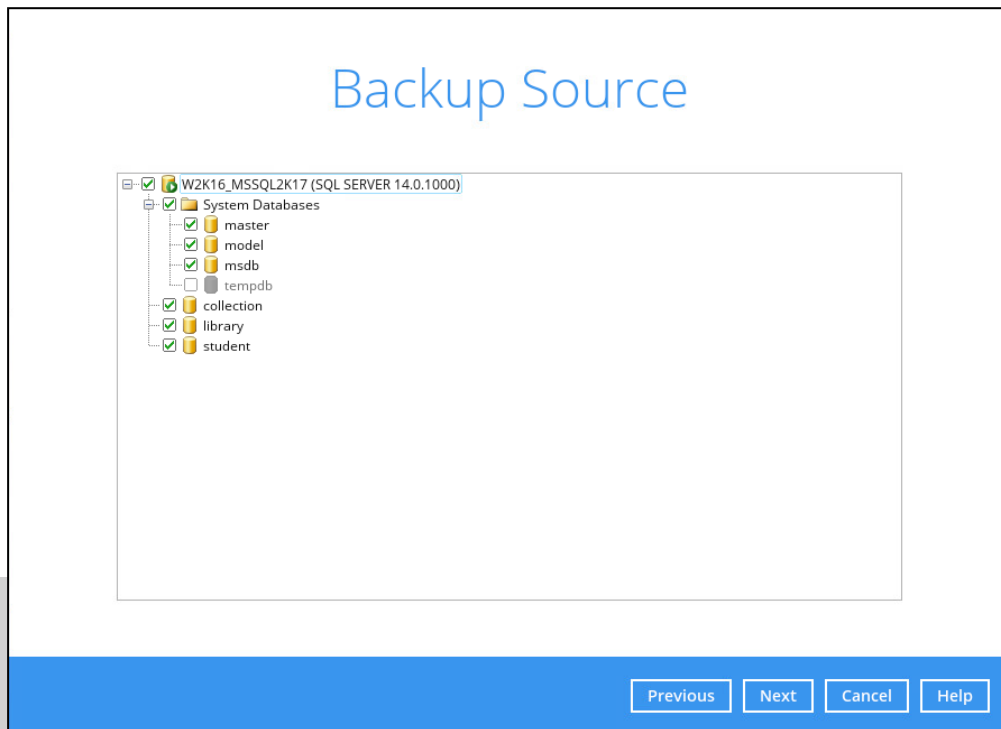
Server

Login ID

Password

- In the **Backup Source** menu, select the database you would like to back up, then click **Next** to proceed.

If you have chosen to back up multiple SQL instances in the previous step, databases in all the chosen instances will be shown here.



- In the Schedule menu, you can configure a backup schedule for backup job to run automatically at your specified time interval. Click **Add** to add a new schedule, then click **Next** to proceed when you are done with the settings.

	VSS Mode	ODBC Mode
Name	Name of the Backup Schedule	
Backup set type	<ul style="list-style-type: none"> ➤ Full 	<ul style="list-style-type: none"> ➤ Full ➤ Differential ➤ Transaction Log
	Refer to Appendix A for details on the differences of the backup set type.	
Type	Choose frequency for this backup schedule to occur	
Start backup	Choose a specific time or interval for this backup schedule to start	
Stop	Choose when backup will stop, only applies to schedules with start backup "at" and is not supported for periodic backup schedule (start backup "every")	



Run Retention Policy after backup	Check this box if you wish to enable the Retention Policy setting
--	---

Schedule

Run scheduled backup for this backup set

On

Existing schedules

-  **Normal**
Full;Weekly - Friday (Every week at 23:00)
-  **Periodic**
Full;Weekly - Saturday (Every 12 hours)

6. In the Destination menu, select a backup destination where the backup database will be stored. Click the “+” icon next to **Add new storage destination / destination pool**.

Destination

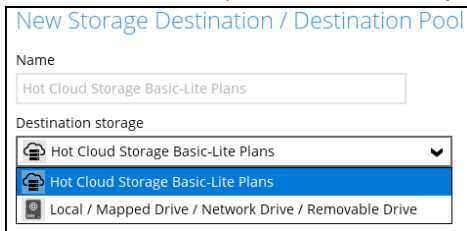
Backup mode

Sequential

Existing storage destinations

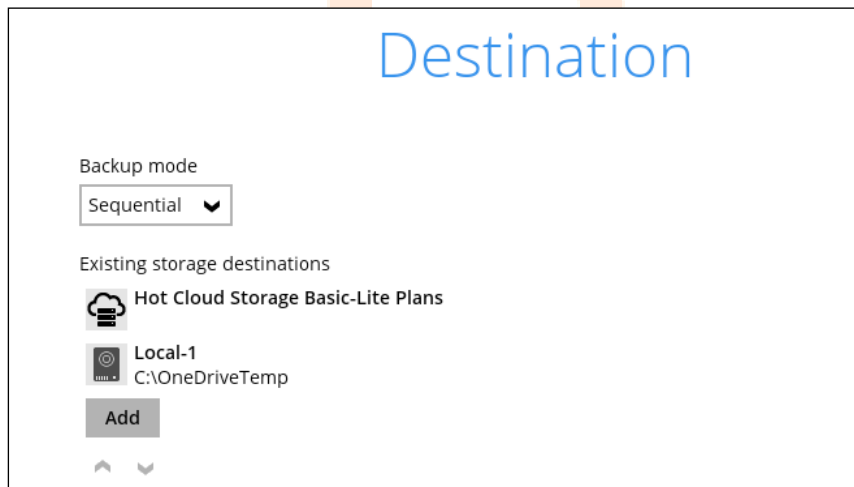
Add new storage destination / destination pool

7. Select the destination storage (Microsoft SQL Server feature is only offered on Business & Professional Plans), then click **OK** to proceed.

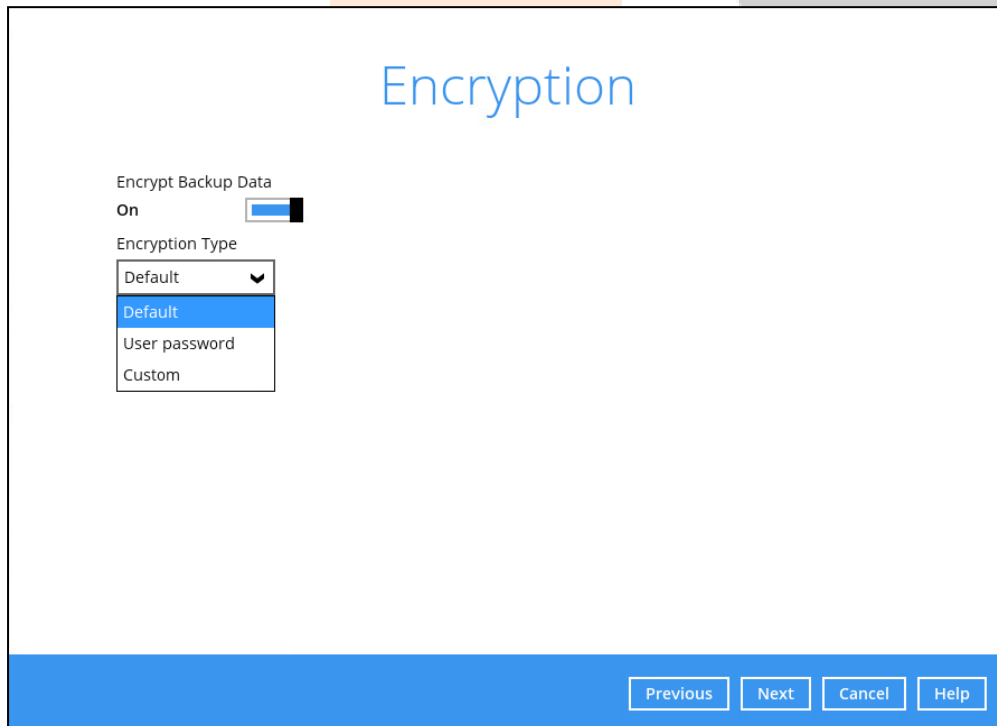


For more information regarding backing up to cloud storage destination, refer to Appendix C Cloud Storage as Backup Destination.

8. Click **Next** on the Destination menu page to proceed.



9. In the Encryption window, the default **Encrypt Backup Data** option is enabled with an encryption key preset by the system which provides the most secure protection.



You can choose from one of the following three Encryption Type options:

- **Default** – an encryption key with 44 alpha numeric characters will be randomly generated by the system
- **User password** – the encryption key will be the same as the login password of your Backup247 Advanced Client (B247PRO) at the time when this backup is created. Please be reminded that if you change the Backup247 Advanced Client (B247PRO) login password later, the encryption keys of the backup sets previously created with this encryption type will remain unchanged.
- **Custom** – you can customize your encryption key, where you can set your own algorithm, encryption key, method and key length.

Encryption

Encrypt Backup Data
On

Encryption Type
Custom ▼

Algorithm
AES ▼

Encryption key

Re-enter encryption key

Method
 ECB CBC

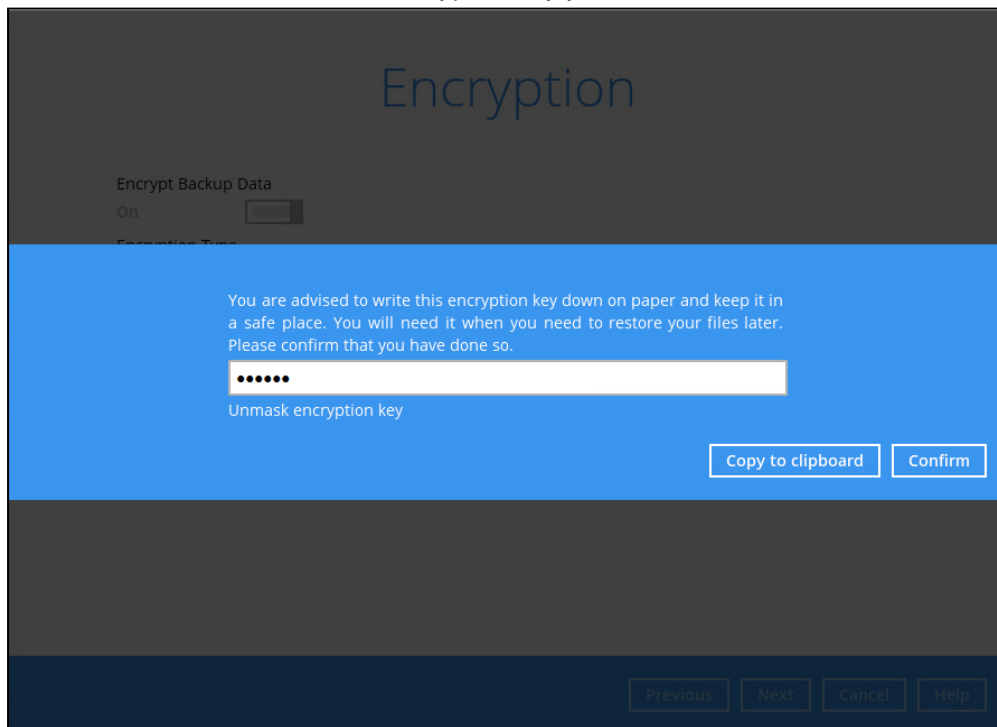
Key length
 128-bit 256-bit

NOTE

For best practice on managing your encryption key, refer to the following article. [FAQ: Best practices for managing encryption key on Backup247 Advanced Client \(B247PRO\) or Backup247 Standard Backup Suite \(B247LITE\)?](#).

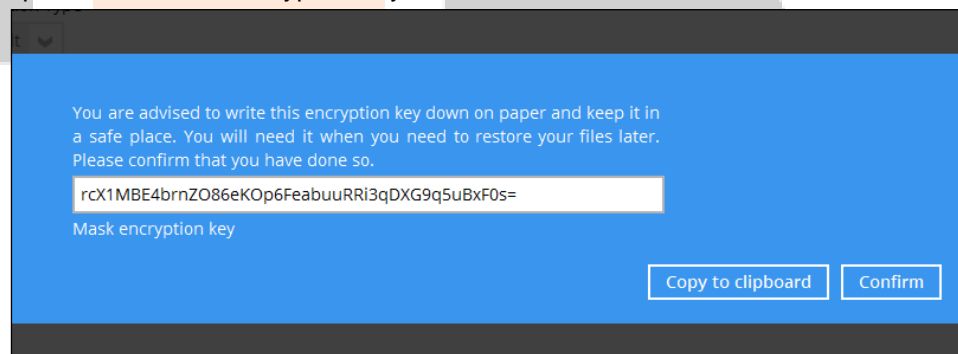
Click **Next** when you are done setting.

10. If you have enabled the Encryption Key feature in the previous step, the following pop-up window shows, no matter which encryption key you have selected.



The pop-up window has the following three options to choose from:

- **Unmask encryption key** – The encryption key is masked by default. Click this option to show the encryption key.



- **Copy to clipboard** – Click to copy the encryption key, then you can paste it in another location of your choice.
- **Confirm** – Click to exit this pop-up window and proceed to the next step.

11. Enter the Windows login credentials for user authentication. Click **Next** to proceed.

NOTE
This screen shows only if you have configured scheduled backup.

Windows User Authentication

Domain Name (e.g. Ahsay.com) / Host Name

User name

Password

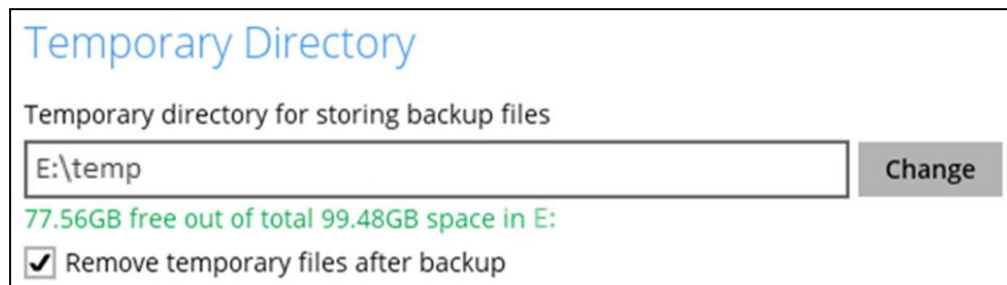
12. The following screen shows when the new backup set is created successfully.

Congratulations!

"MS SQL Server Backup Set Name" is successfully created.

13. Click **Backup now** to start a backup immediately, or you can run a backup job later by following the instructions in Running Backup Job for Microsoft SQL Server.

14. Based on the Best Practices and Recommendations, it is highly recommended to set the **temporary directory** to another location other than Drive C: (e.g. Drive E:). To do this, go to **Backup Sets > Others > Temporary Directory** and click the **Change** button to browse for another location.



Temporary Directory

Temporary directory for storing backup files

E:\temp Change

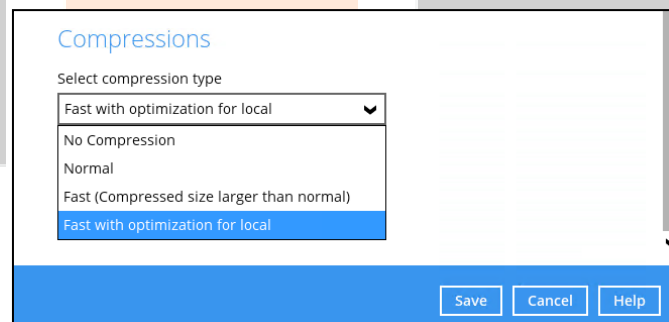
77.56GB free out of total 99.48GB space in E:

Remove temporary files after backup

15. Optional: Select your preferred **Compression** type. By default, the compression type is Fast with optimization for local.

Go to **Others > Compressions**, then select from the following:

- No Compression
- Normal
- Fast (Compressed size larger than normal)
- Fast with optimization for local



Compressions

Select compression type

Fast with optimization for local ▼

No Compression

Normal

Fast (Compressed size larger than normal)

Fast with optimization for local

Save Cancel Help

7.2 Running Backup Job for Microsoft SQL Server

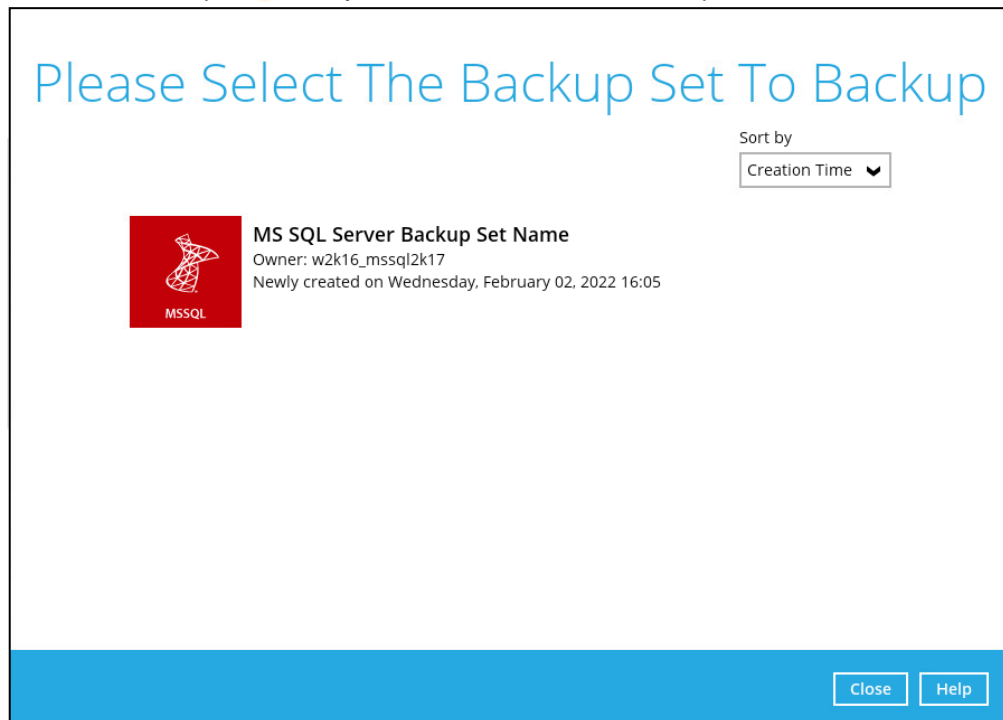
1. Log in to Backup247 Advanced Client (B247PRO).

For instructions on how to do this refer to Chapter 8 of Backup247 Advanced Client (B247PRO) v9 Quick Start Guide for Windows.

2. Click the Backup icon on the main interface of Backup247 Advanced Client (B247PRO).




3. Select the backup set which you would like to start a backup for.



4. If you would like to modify the Destinations, Migrate Data or Run Retention Policy settings, click on **Show advanced option**.

For VSS Backup Mode

Choose Your Backup Options

 MS SQL Server Backup Set Name

Backup set type
Full


[Show advanced option](#)

[Previous](#) [Backup](#) [Cancel](#) [Help](#)

For ODBC Backup Mode

Select the Backup set type. For more details regarding the Backup set type, refer to Appendix A Backup Set Type.

Choose Your Backup Options

 MS SQL Server Backup (ODBC)

Backup set type

Full

Differential

Transaction Log

[Show advanced option](#)

[Previous](#) [Backup](#) [Cancel](#) [Help](#)

IMPORTANT

Upon upgrade to B247CBS v9 from Backup247OBS v6, when attempting to run a transaction log backup for backup sets created on v6 for the **FIRST TIME**, a full backup will be performed instead. As the disk space required for running a full backup set may significantly be larger than running a transaction log backup, make sure the backup destination has enough quota to accommodate the full backup.

5. When advanced options are shown, it is recommended that you tick the checkbox next to **Run Retention Policy after backup** in the Retention Policy section at the bottom. This will help you save hard disk quota in the long run.

Choose Your Backup Options

MS SQL Server Backup Set Name

Backup set type
Full

Destinations
 B247CBS (Host: 10.3.121.17:80)

Migrate Data
 Migrate existing data to latest version

Retention Policy
 Run Retention Policy after backup

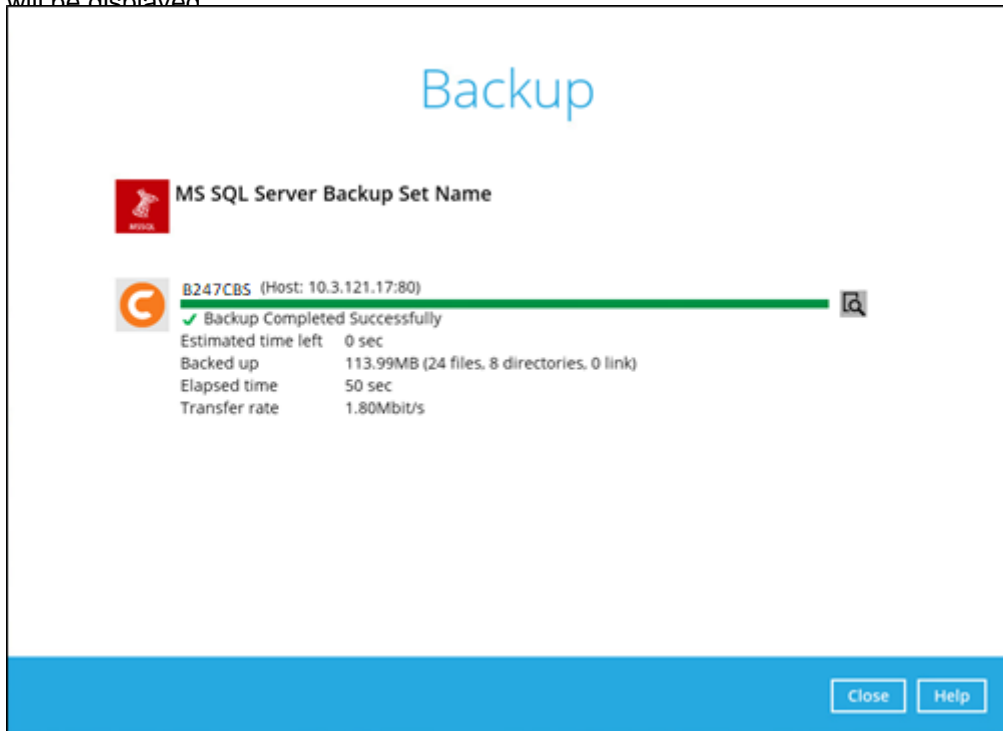
[Hide advanced option](#)


Previous Backup Cancel Help

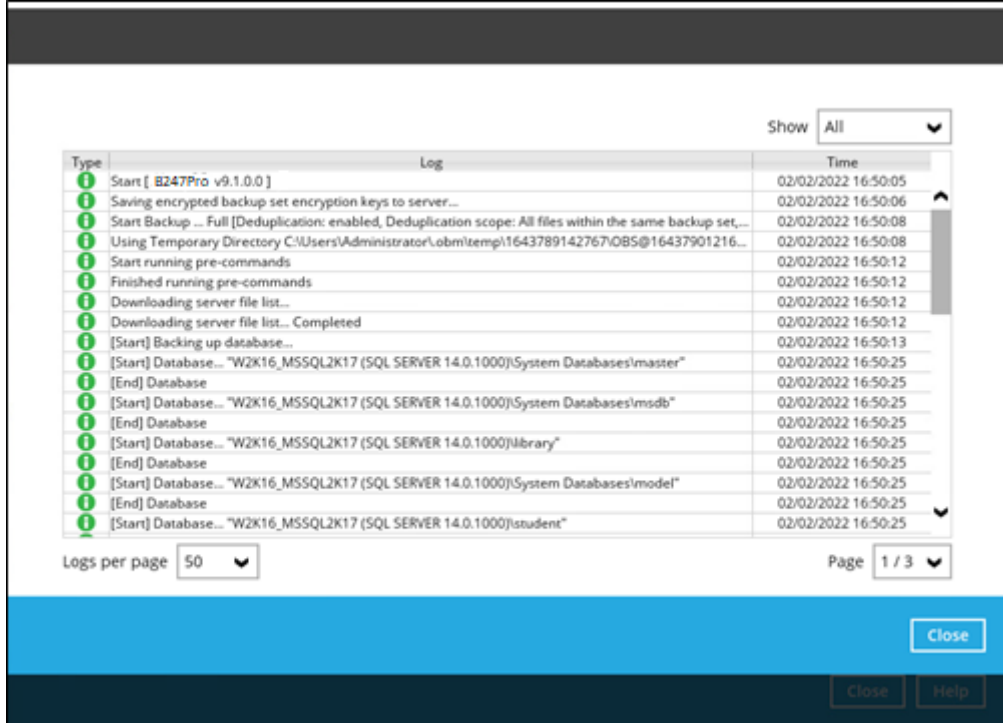
NOTE

The Migrate Data option will only be displayed if Deduplication is enabled for the backup set. When the Migrate Data option is enabled, the existing data will be migrated to the latest version during a backup job. Backup job(s) for backup sets with Migrate Data enabled may take longer to finish. For more information about this feature, refer to [B247CBS v9 New Features Datasheet](#).

- Click **Backup** to start the backup job. Once finished, "Backup Completed Successfully" will be displayed.

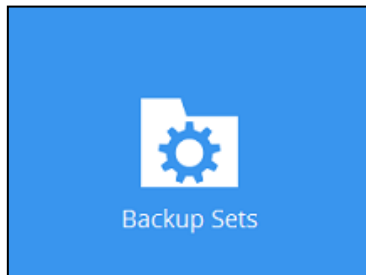


To check the log of your backup, click this icon . It will show you the log of your backup with corresponding date and time.

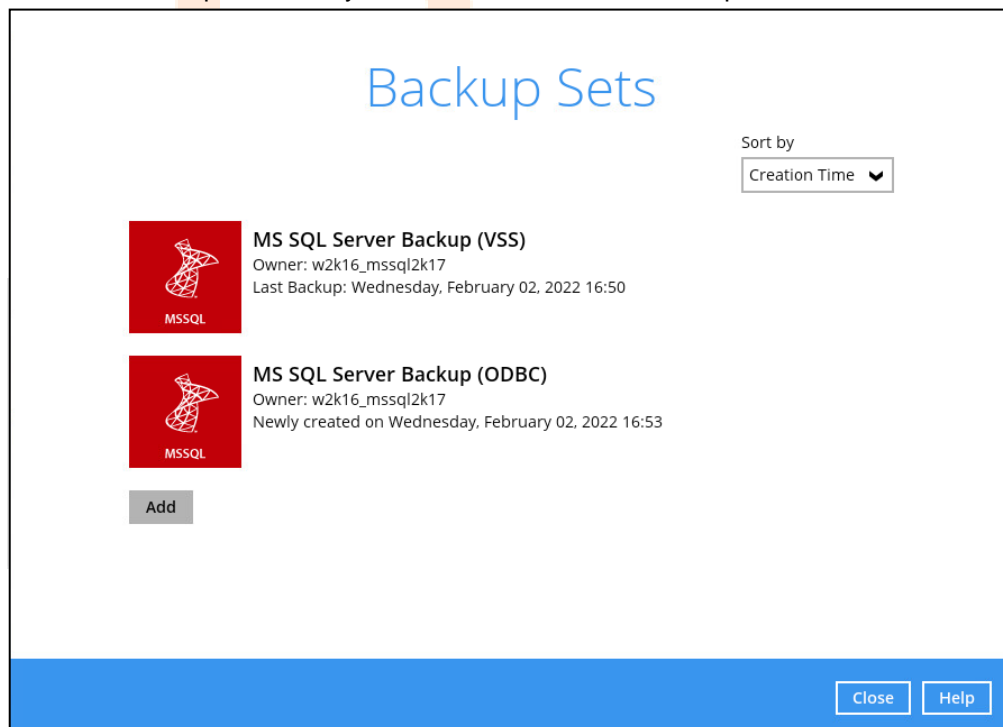


7.3 Configuring Backup Schedule for Automated Backup

1. Click the **Backup Sets** icon on the Backup247 Advanced Client (B247PRO) main interface.

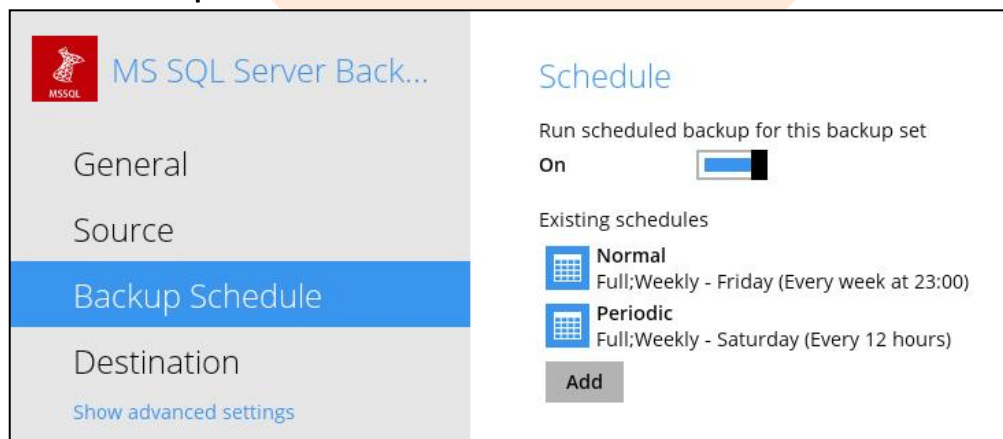


2. Select the backup set which you would like to create a backup schedule for.

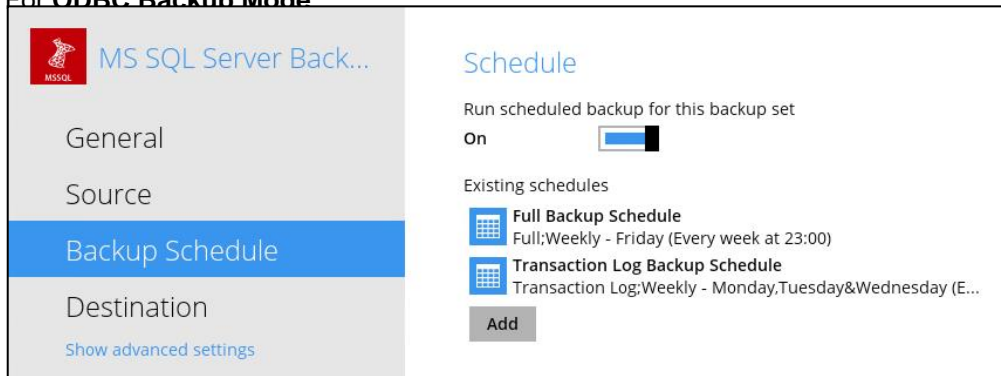


3. Go to the **Backup Schedule** tab. If the **Run scheduled backup for this backup set** option is off, switch it **On**. Existing schedules will be listed by default.

For **VSS Backup Mode**:



For **ODBC Backup Mode**:



4. Click the **Add** button to add a new backup schedule. The New Backup Schedule window will appear.
5. In the New Backup Schedule window, configure the following backup schedule settings.

- **Name** – the name of the backup schedule.
- **Backup set type** – the type of backup set. VSS and ODBC backup modes have different backup set types:

VSS Backup Mode – only has Full backup set types

ODBC Backup Mode – has Full, Differential and Transaction Log backup set types

For more information, refer to Appendix A Backup Set Type.

- **Type** – the type of backup schedule. There are four (4) different types of backup schedule: Daily, Weekly, Monthly and Custom.
 - **Daily** – the time of the day or interval in minutes/hours when the backup job will run.

VSS Backup Mode

ODBC Backup Mode

New Backup Schedule

Name:

Backup set type: Full

Type:

Start backup: at :

Stop:

Run Retention Policy after backup

New Backup Schedule

Name:

Backup set type:

- Full
- Differential
- Transaction Log

Type:

Start backup: at :

Stop:

Run Retention Policy after backup

- Weekly** – the day of the week and the time of the day or interval in minutes/hours when the backup job will run.

VSS Backup Mode

ODBC Backup Mode

New Backup Schedule

Name
Weekly-1

Backup set type
Full

Type
Weekly

Backup on these days of the week
 Sun Mon Tue Wed Thu Fri Sat

Start backup
 at 17 : 15

Stop
 until full backup completed

Run Retention Policy after backup

New Backup Schedule

Name
Transaction Log Backup Schedule

Backup set type
 Full
 Differential
 Transaction Log

Type
Weekly

Backup on these days of the week
 Sun Mon Tue Wed Thu Fri Sat

Start backup
 at 17 : 00

Stop
 until full backup completed

Run Retention Policy after backup

- Monthly** – the day of the month and the time on that day when the backup job will run.

VSS Backup Mode

ODBC Backup Mode

New Backup Schedule

Name
Monthly-1

Backup set type
Full

Type
Monthly

Backup on the following day every month
 Day 1
 First Sunday

Start backup at
 17 : 15 on the selected days

Stop
 until full backup completed

Run Retention Policy after backup

New Backup Schedule

Name
Monthly-1

Backup set type
 Full
 Differential
 Transaction Log

Type
Monthly

Backup on the following day every month
 Day 1
 First Sunday

Start backup at
 17 : 05 on the selected days

Stop
 until full backup completed

Run Retention Policy after backup

- **Custom** – a specific date and time when the backup job will run.

VSS Backup Mode

ODBC Backup Mode

New Backup Schedule

Name
Custom-1

Backup set type
Full

Type
Custom

Backup on the following day once
2022 June 01

Start backup at
17 : 15

Stop
until full backup completed

Run Retention Policy after backup

New Backup Schedule

Name
Custom-1

Backup set type
 Full
 Differential
 Transaction Log

Type
Custom

Backup on the following day once
2022 June 01

Start backup at
17 : 00

Stop
until full backup completed

Run Retention Policy after backup

- **Start backup** – the start time of the backup job.
 - **at** – this option will start a backup job at a specific time.
 - **every** – this option will start a backup job in intervals of minutes or hours.

Start backup
every 1 minute

Stop
until full backup completed

Run Retention Policy after backup

1 minute
2 minutes
3 minutes
4 minutes
5 minutes
6 minutes
10 minutes
12 minutes

Start backup
every 1 minute

Stop
until full backup completed

Run Retention Policy after backup

30 minutes
1 hour
2 hours
3 hours
4 hours
6 hours
8 hours
12 hours

Here is an example of a backup set that has a periodic and normal backup schedule.

Figure 1.1

Figure 1.2

Figure 1.1 – Periodic backup schedule runs every 4 hours from Monday – Friday during business hours

Figure 1.2 – Normal backup schedule runs at 21:00 or 9:00 PM on Saturday and Sunday on weekend non-business hours

- **Stop** – the stop time of the backup job. This only applies to schedules with start backup “at” and is not supported for periodic backup schedule (start backup “every”)

- **until full backup completed** – this option will stop a backup job once it is complete. This is the configured stop time of the backup job by default.
- **after (defined no. of hrs.)** – this option will stop a backup job after a certain number of hours regardless of whether the backup job has completed or not. This can range from 1 to 24 hrs.

The number of hours must be enough to complete a backup of all files in the backup set. For small files in a backup, if the number of hours is not enough to back up all files, then the outstanding files will be backed up in the next backup job. However, if the backup set contains large files, this may result in partially backed up files.

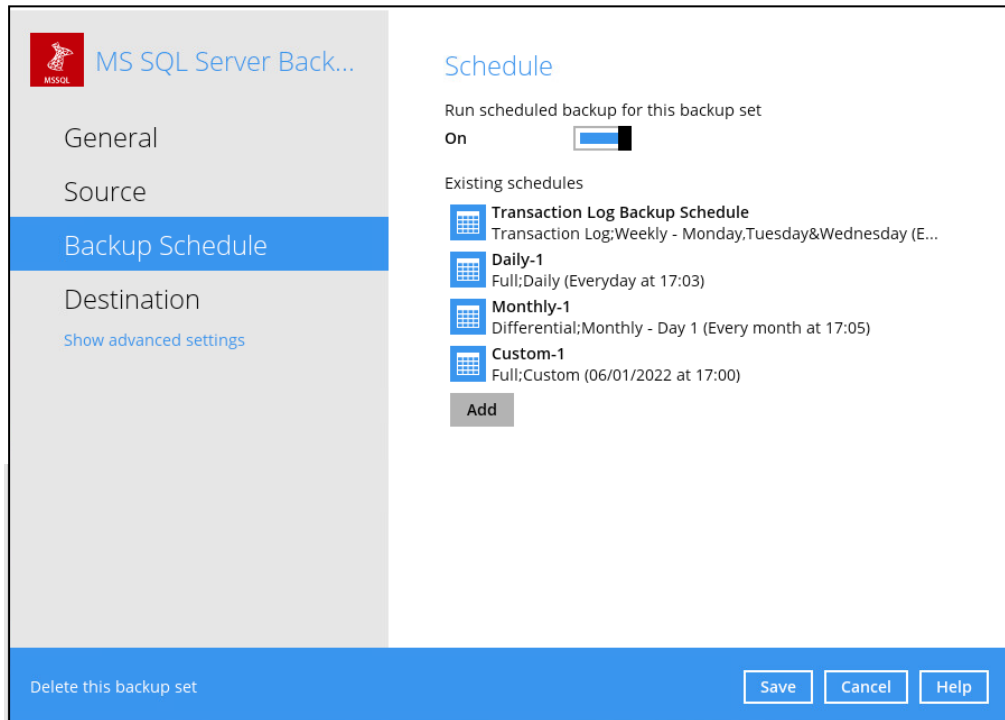
For example, if a backup has 100GB file size which will take approximately 15 hours to complete on your environment, but you set the “stop” after 10 hours, the file will be partially backed up and cannot be restored. The next backup will upload the files from scratch again.

The partially backed up data will have to be removed by running the data integrity check.

As a general rule, it is recommended to review this setting regularly as the data size on the backup machine may grow over time.

- **Run Retention Policy after backup** – if enabled, the Backup247 Advanced Client (B247PRO) will run a retention policy job to remove files from the backup destination(s) which have exceeded the retention policy after performing a backup job. To save hard disk quote in the long run, it is recommended to enable this option.

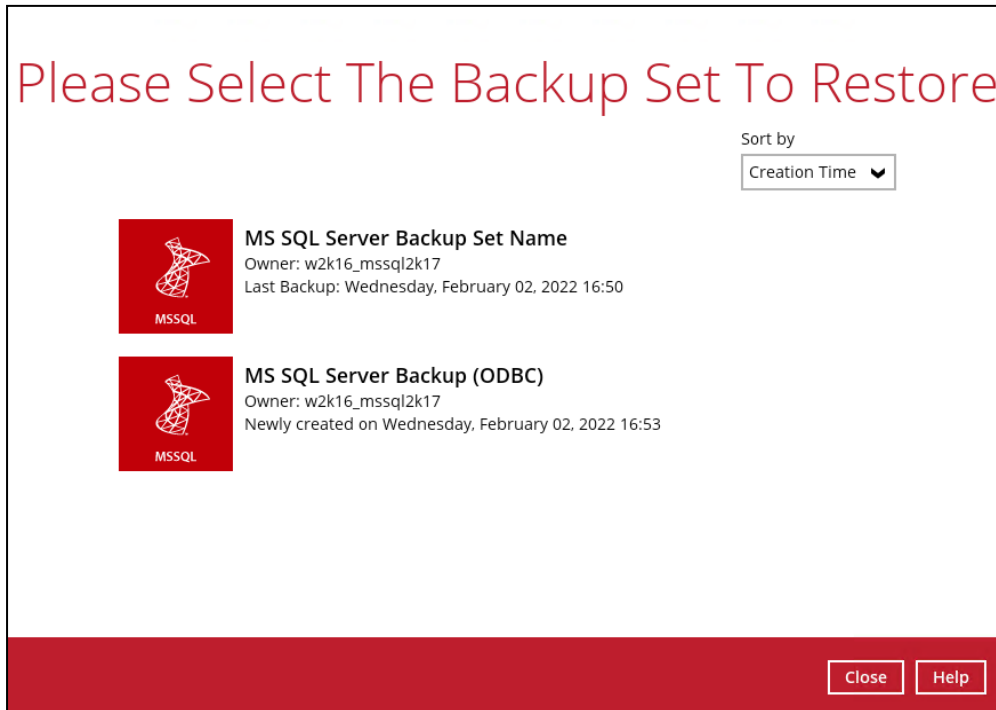
As an example, the four types of backup schedule (i.e. Daily, Weekly, Monthly and Custom) may look like the following:



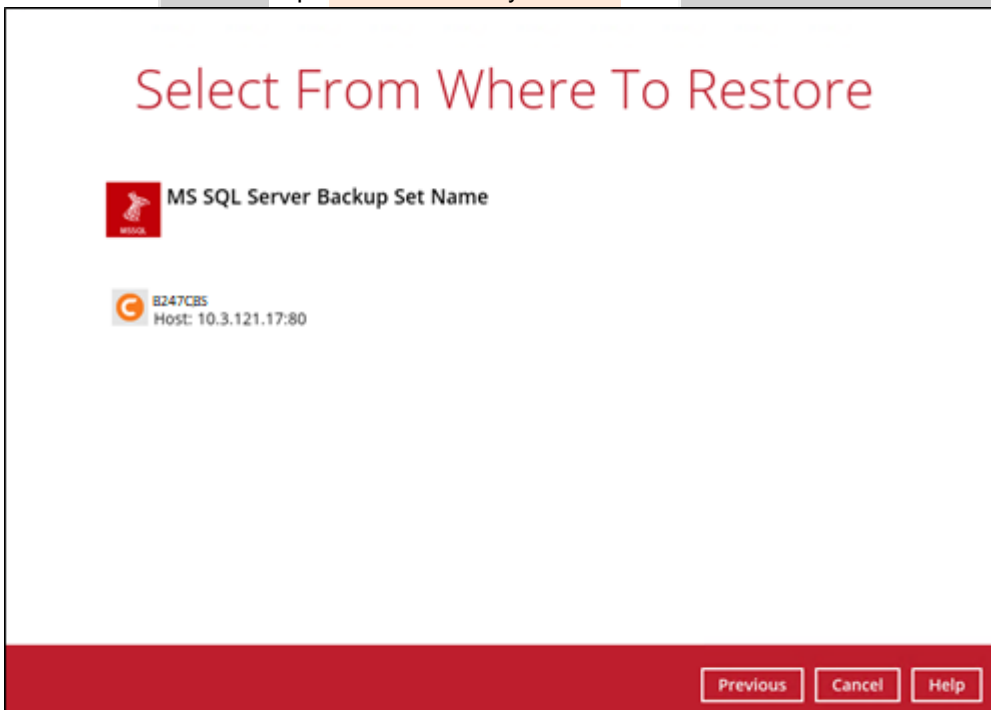
6. Click **Save** to confirm your settings once done.

8 Restoring Backup for Microsoft SQL Server

1. In the Backup247 Advanced Client (B247PRO) main interface, click the **Restore** icon.
2. Select the backup set that you would like to restore.

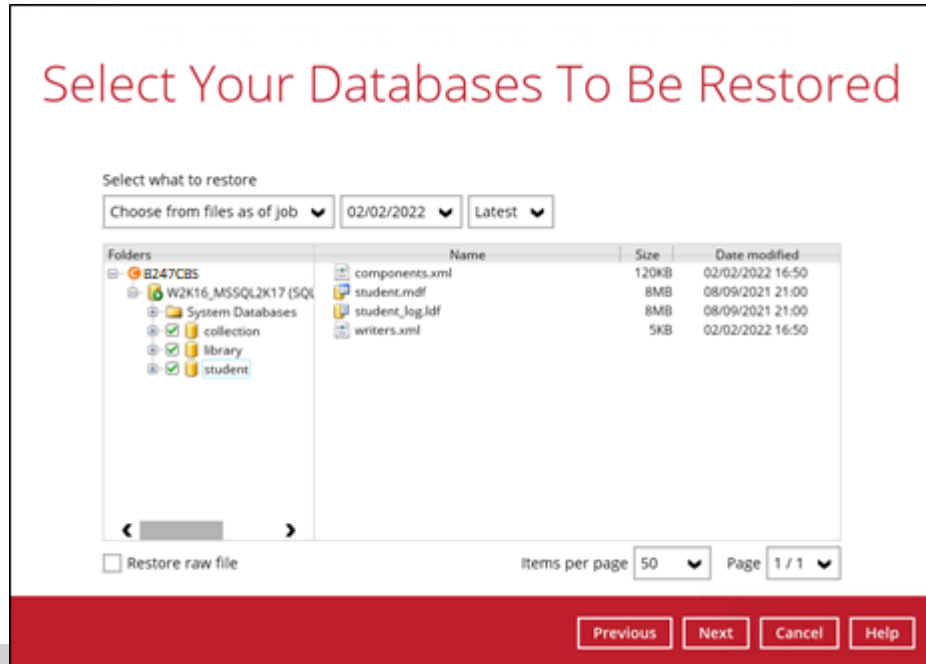


3. Select the backup destination that you would like to restore data from.

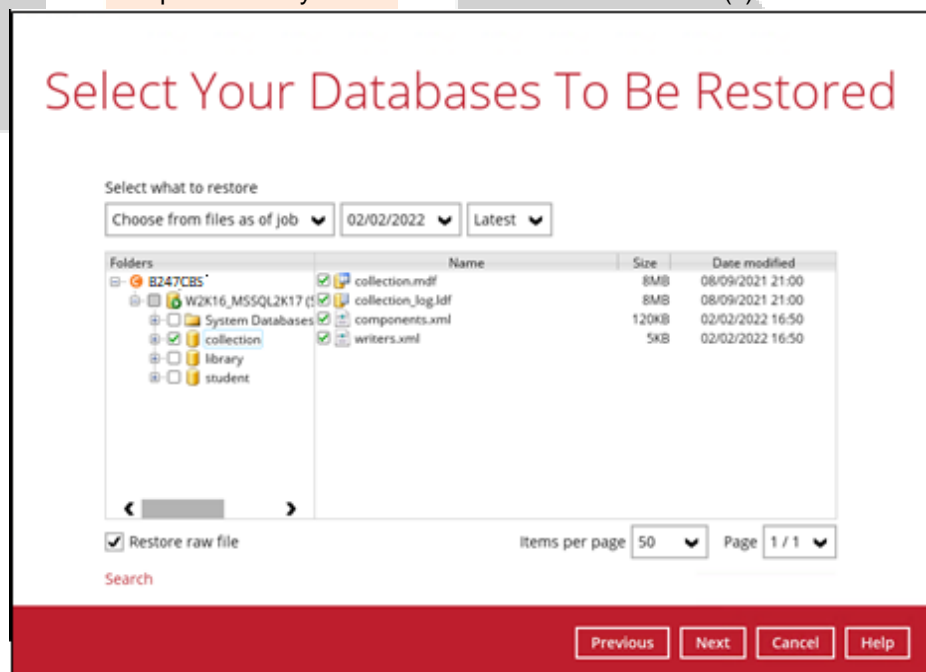


4. Select the database(s) or raw file(s) you would like to restore. You can also choose to restore backed up database or raw file from a specific backup job of your choice using the **Select what to restore** drop-down menu at the top. Click **Next** to proceed when you are done with the selection.

- Restoring database - expand the menu tree to select which database to restore. Follow 5a below to select restoring to the original SQL server or an alternate SQL server.



- Restoring raw file - you can select individual raw database file to restore by clicking the **Restore raw file** checkbox at the left bottom corner. Follow 5b below to select the path where you would like to restore the raw file(s) to.



Limitations:

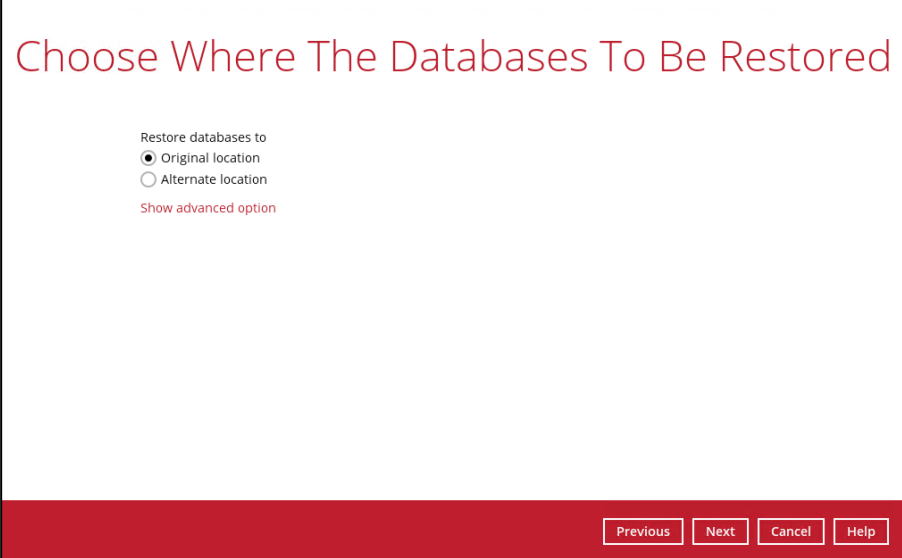
- If you would like to restore database with the Alternate location option, you can only choose to restore one database at a time.
- If you would like to restore database to an alternate SQL server with the **Restore raw file** option, make sure you have checked the **Restore raw file** option.

5. Select the destination to restore. Refer to 5a or 5b below for steps to restore the database automatically (Restore database to Original/Alternate location) or manually (Restore raw file).

5a. Select to restore the database to its Original SQL server, or to an Alternate SQL server.

Restore to Original SQL server

Select the **Original location** option, then press **Next** to proceed.



Choose Where The Databases To Be Restored

Restore databases to

Original location

Alternate location

Show advanced option

Previous Next Cancel Help

If you would like to modify the Verify checksum of in-file delta files during restore setting, click **Show advanced option**.

④ **Restore to Alternate SQL server (only for restoring raw file)**

- i. Select the **Alternate location** option, then press **Next**.

Choose Where The Databases To Be Restored

Restore databases to

Original location

Alternate location

[Show advanced option](#)

Previous Next Cancel Help

If you would like to modify the In-File Delta type (for Full backup set type only), Destinations and Retention Policy settings, click **Show advanced option**.

- ii. Name the new database. Click **Browse** to select the locations where you would like to restore the database and log files to.

Alternate database

Database name

collection_clone

Original Name	New Location	
collection.mdf	D:\MSSQL\DATA	Browse
collection_log.ldf	D:\MSSQL\DATA	Browse

Previous Next Cancel Help

- iii. Click **Next** to proceed when you are done with the settings.

- 5b. If you have chosen to restore raw file, choose the location path where you would like the raw file(s) to be restored to. Click **Next** to proceed.

The screenshot shows a dialog box titled "Choose Where The Databases To Be Restored". It features a text input field labeled "Restore databases to" with a "Browse" button to its right. Below the input field is a link labeled "Show advanced option". At the bottom of the dialog, there is a red bar containing four buttons: "Previous", "Next", "Cancel", and "Help".

If you would like to modify the “Verify checksum of in-file delta files during restore” setting, click **Show advanced option**.

Then restore the database manually with the restored database file via the SQL Server Management Studio. Refer to the MS KB article below for instructions. Restore a Database Backup (SQL Server Management Studio)

6. Select the temporary directory for storing temporary files, such as delta files when they are being merged, click **Restore** to start the restoration.

The screenshot shows a dialog box titled "Temporary Directory". It features a text input field labeled "Temporary directory for storing restore files" with the value "C:\Users\Administrator\temp" and a "Browse" button to its right. At the bottom of the dialog, there is a red bar containing four buttons: "Previous", "Restore", "Cancel", and "Help".

7. The following screen with the text **Restore Completed Successfully** shows when the restoration is completed.



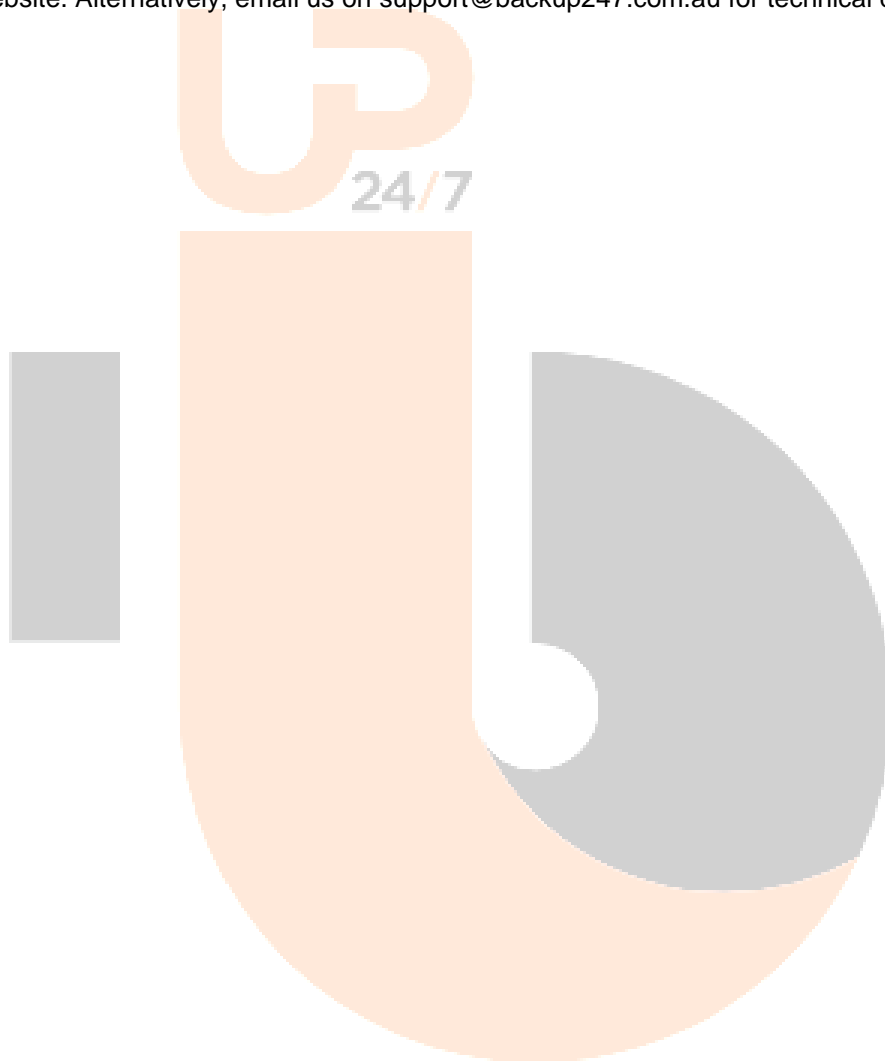
9 Contacting Backup247

9.1 Technical Assistance

To contact Backup247 support representatives for technical assistance, visit our website <https://backup247.com.au/Support.php>

9.2 Documentation

Documentations for all Backup247 modules, user guide and QuickStart are available on our website. Alternatively, email us on support@backup247.com.au for technical demo.

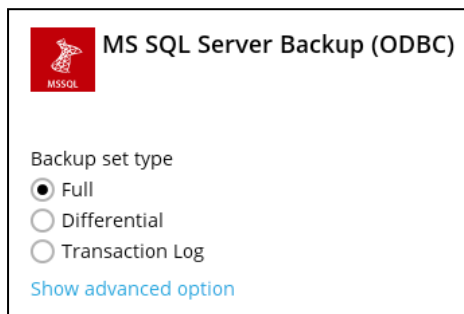


Appendix

Appendix A Backup Set Type

There are three kinds of backup set type to choose from, namely Full backup, Differential backup and Transaction Log backup. The information below gives you an overall idea of what each backup set type is like.

Full backup



MS SQL Server Backup (ODBC)

Backup set type

Full

Differential

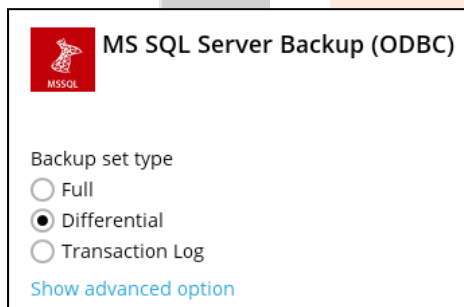
Transaction Log

[Show advanced option](#)

To perform a Full backup, Backup247 Advanced Client (B247PRO) requests the SQL server to generate a Volume Shadow Copy Service (VSS) snapshot of the database. Backup247 Advanced Client (B247PRO) will back up the VSS snapshot generated by the SQL server directly. A Full backup is required in order to run Differential backups.

For further details on this topic, please refer to Full Database Backups (SQL Server).

Differential backup



MS SQL Server Backup (ODBC)

Backup set type

Full

Differential

Transaction Log

[Show advanced option](#)

A Differential backup of the SQL server saves changes to the database that have occurred since the last Full backup. To perform a Differential backup, Backup247 Advanced Client (B247PRO) requests the SQL server to generate a Differential backup file of the database since the last Full backup. At the back end, the SQL server performs the following:

1. Generate a VSS snapshot of the database of the current state.
2. Compare the VSS snapshot just generated by the SQL server with the one generated from the last Full backup in order to produce a Differential backup file.
3. The Differential backup file being sent to Backup247 Advanced Client (B247PRO) for backup.

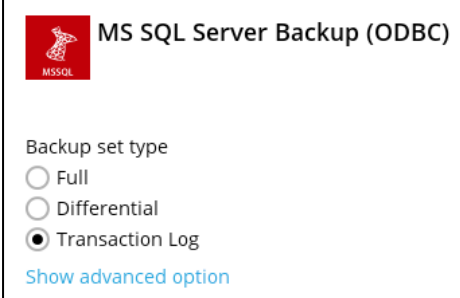
Using a Differential backup file to recover a database requires the restoration of only two data sets - the last Full backup and the most recent Differential backup.

The disadvantage of using Differential backups is that it duplicates the backed up data in each backup until a Full backup is performed. If there are many Differential backups taken between Full backups, the storage space required may become large.

The SQL server does not allow a Differential backup to occur when there has been no previous Full backup to establish the starting point.

For further details on this topic, please refer to Backup Overview (SQL Server).

Transaction Log



MS SQL Server Backup (ODBC)

Backup set type

Full

Differential

Transaction Log

[Show advanced option](#)

Every SQL Server database has a transaction log that records all transactions and the database modifications made by each transaction. The transaction log is a critical component of the database. If there is a system failure, you will need that log to bring your database back to a consistent state.

If you have chosen to back up in ODBC mode, you can configure schedule backup to back up the transaction log regularly at a time interval of your choice.

IMPORTANT

Upon upgrade to B247CBS v9 from Backup247OBS v6, when attempting to run a Transaction Log backup for backup sets created on v6 for the **FIRST TIME**, a Full backup will be performed instead. As the disk space required for running a Full backup set may significantly be larger than running a Transaction Log backup, make sure the backup destination has enough quota to accommodate the Full backup.

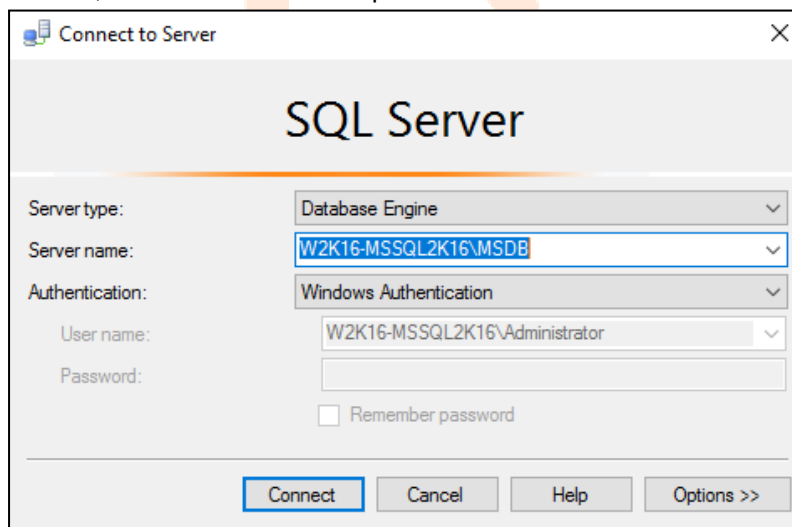
Appendix B Truncating Transaction Log

The instructions below only apply for database with full recovery model.

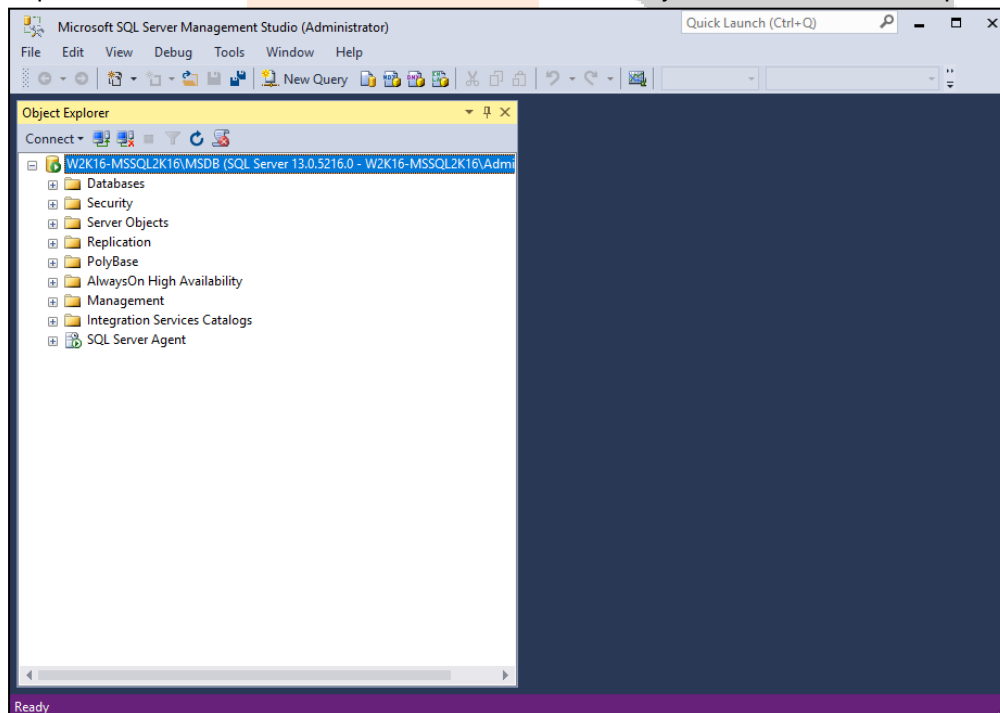
Since Backup247 Advanced Client (B247PRO) v9 utilizes VSS-based backup, which does not support log backup (A Guide for SQL Server Backup Application Vendors), transaction log of database in full / bulk-logging recovery model may eventually fill up all disk space available on the volume

Below are steps to perform a log backup in the SQL Server Management Studio. For further details on this topic, refer to Back Up a Transaction Log.

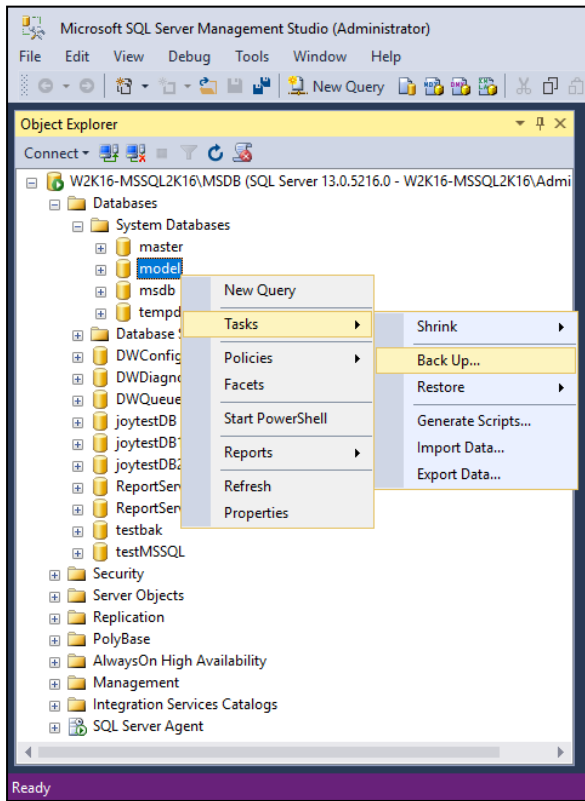
1. Launch SQL Server Management Studio in Windows.
2. Select the SQL server you would like to connect to, and the corresponding authentication method, then click **Connect** to proceed.



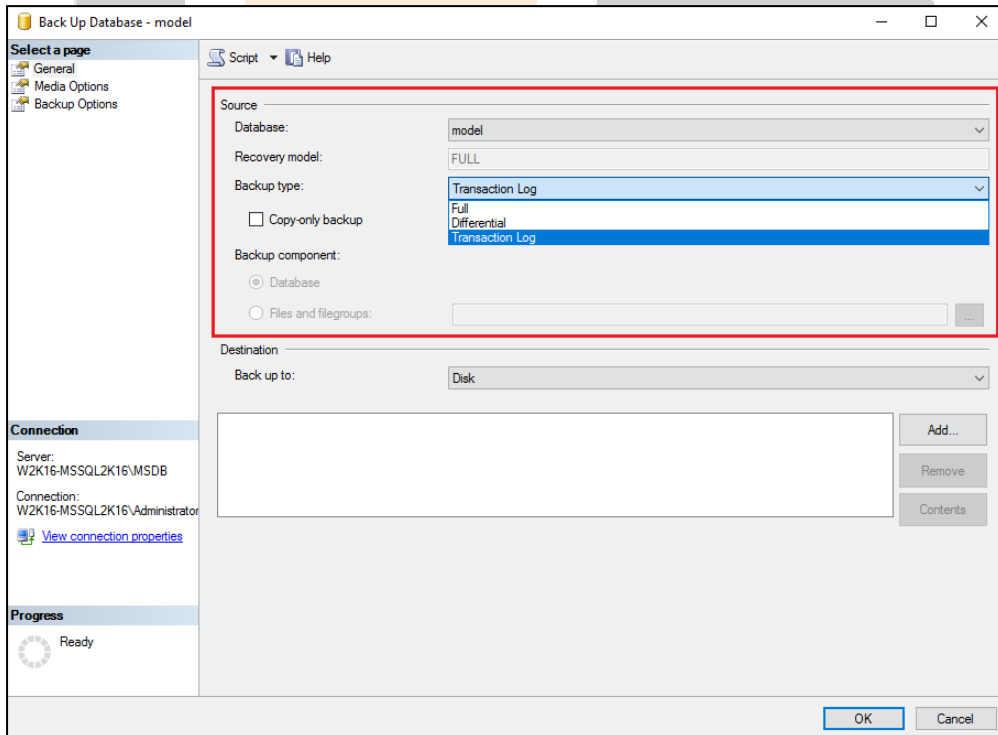
3. Expand the menu tree and select the desired database you would like to back up.



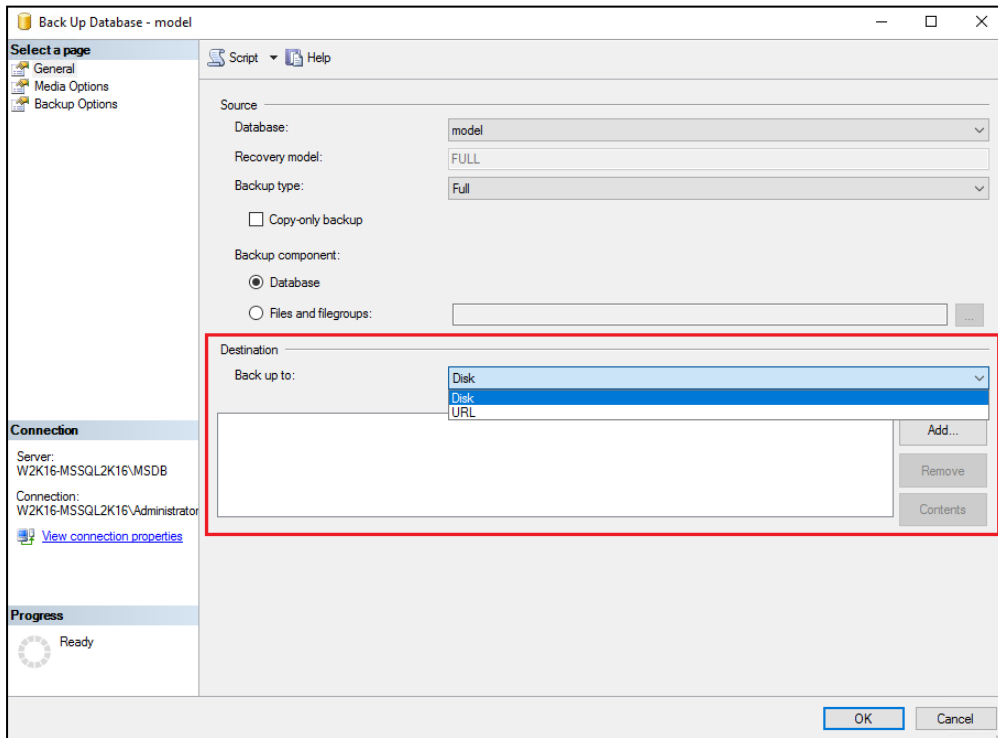
- Right click the database name, then go to **Tasks > Back Up**. The Back Up Database dialog box shows.



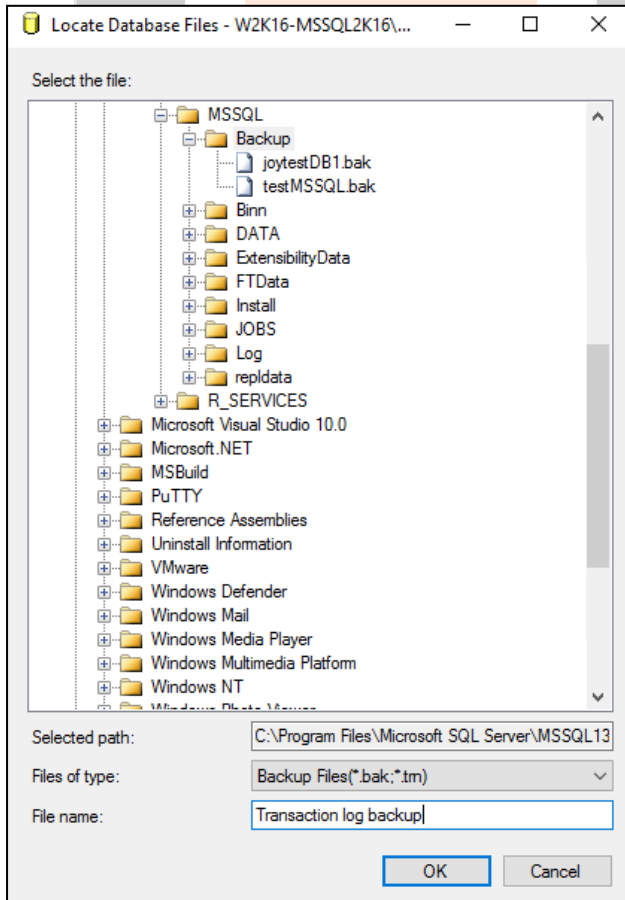
- In the **Source** section, confirm the database name, then select Transaction Log in the **Backup type** drop-down menu.



6. Select **Disk** or **URL** as the destination of the backup, then click **Add** to select a destination path.

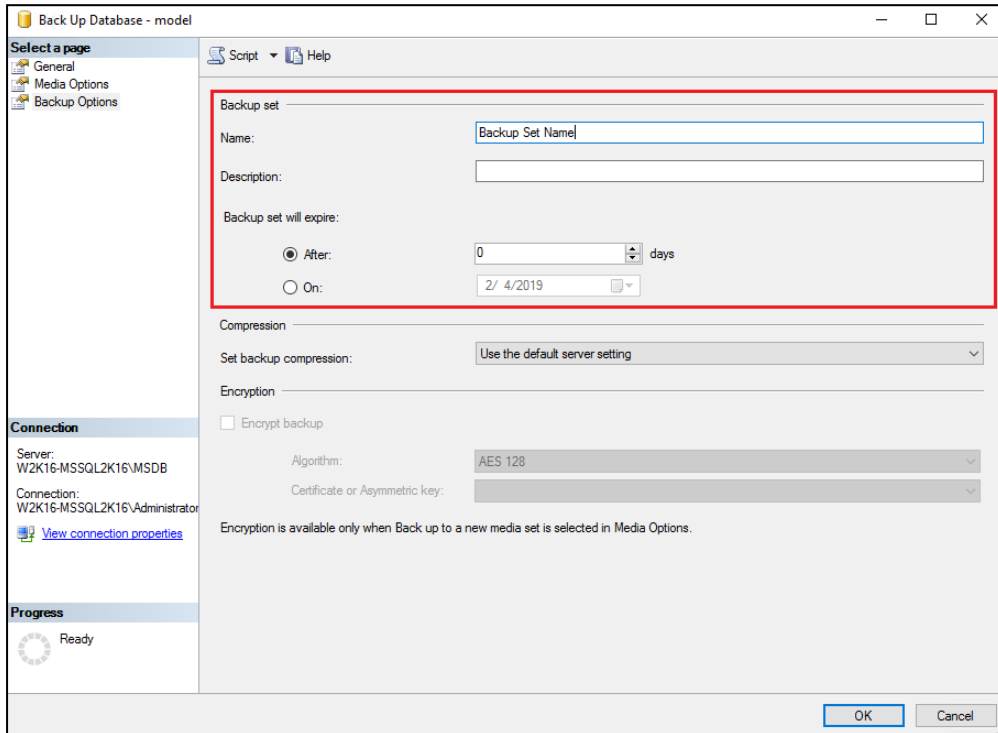


7. After selecting the destination path, click **OK** twice to proceed.

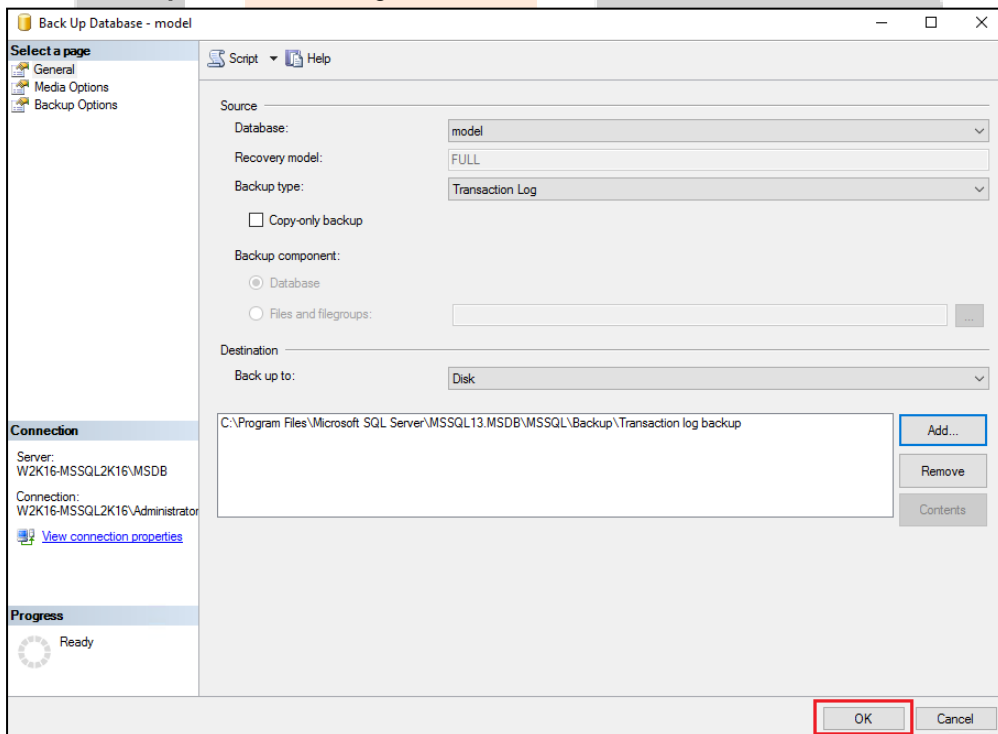


- Go to the **Backup Options**, then in the **Backup set** section, name the backup set and enter a description of the backup set if needed.

Configure the Backup set to expire after a specified number of day or on a specified date. Set to 0 day if you do not want the backup set to expire



- Click **OK** to start the transaction log backup when you are done with all the necessary settings in the **Back Up Database** dialog box.

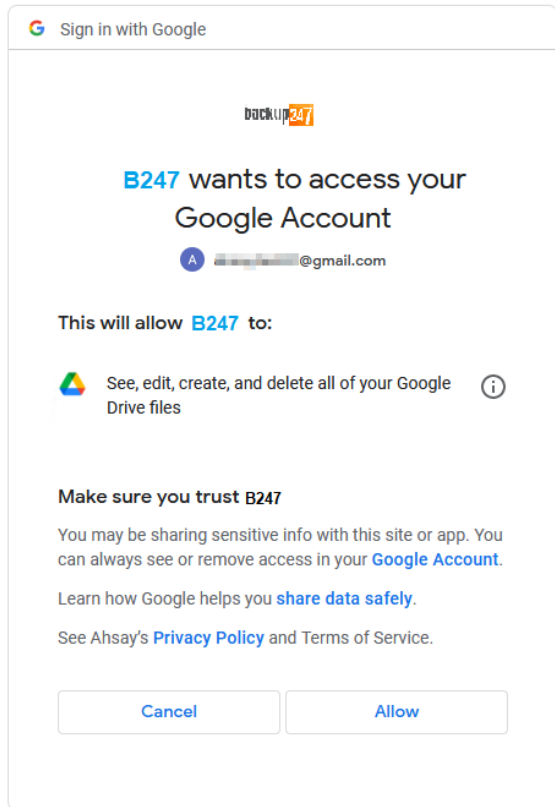


Appendix C Cloud Storage as Backup Destination

For most cloud storage provider (e.g. Dropbox, Google Drive ... etc.), you need to allow Backup247 Advanced Client (B247PRO) to access the cloud destination. Click **OK / Test**, you will be prompted to log in to the corresponding cloud service.

Important: The authentication request will be opened in a new tab / window on the browser, ensure that the pop-up tab / window is not blocked (e.g. pop-up blocker in your browser).

Click **Allow** to permit Backup247 Advanced Client (B247PRO) to access the cloud storage.



Enter the authentication code returned in Backup247 Advanced Client (B247PRO) to complete the destination setup.

NOTE

A backup destination can be set to a supported cloud storage, backup server, FTP / SFTP server, network storage, or local / removable drive on your computer.

Multiple backup destinations can be configured for a single backup set. In fact, it is recommended for you to setup at least 2 backup destinations for your backup set.

For more details on backup destination, for example which cloud service providers are supported, destination type, or limitation, you can refer to the following article: [FAQ: Frequently Asked Questions on Backup Destination](#).

Appendix D ODBC Mode Authentication Method Permissions Check

There are two types of authentication method in ODBC backup mode; Trusted Authentication and MS SQL Authentication. The following procedures can help to determine:

1. If the login credentials used to authenticate a MS SQL Server database backup in ODBC backup mode has the correct permissions.
2. To obtain the size of the spooled database(s) in order to make sure the drive where the temporary folder is located has enough space to accommodate the spooling of the database(s) during backups.

Trusted Authentication

To verify if the login credentials for Trusted Authentication have the correct permissions to access and spool your MS SQL Server database(s) for a backup job, it is recommended to use the following command:

```
osql -E -Q "DECLARE @dbname char(64) SET @dbname = 'xxx' BACKUP DATABASE @dbname TO DISK = '%temporary_path%\%database_name.txt' WITH SKIP"
```

NOTE

1. %temporary_path% is the location of the temporary folder on the MS SQL Server backup set (e.g. E:\temp)
2. 'xxx' is the name of the database selected for backup

Example Scenario: Trusted Authentication using Windows User Account with Sufficient Permissions

1. Log in to Windows using a specific account (e.g. Administrator).
2. Open the command prompt.
3. Use the following osql command.

```
Microsoft Windows [Version 10.0.14393]
(c) 2016 Microsoft Corporation. All rights reserved.

C:\Users\Administrator>osql -E -Q "DECLARE @dbname char(64) SET
@dbname = 'adventureworks2016' BACKUP DATABASE @dbname TO DISK
='E:\temp\adventureworks2016.bak' WITH SKIP"
Processed 26240 pages for database 'adventureworks2016
', file
'AdventureWorks2016_Data' on file 5.
Processed 2 pages for database 'adventureworks2016
', file
'AdventureWorks2016_Log' on file 5.
BACKUP DATABASE successfully processed 26242 pages in 14.397
seconds (14.239 MB/sec).

C:\Users\Administrator>
```

On the example above,

```
@dbname = 'adventureworks2016'
```

'adventureworks2016' is the name of the database selected for backup

```
@dbname TO DISK ='E:\temp\adventureworks2016.bak'
```

'E:\temp' is the temporary folder of the MS SQL Server backup set

4. If the 'adventureworks2016' database is successfully saved to the temporary folder (E:\Temp), then it is verified that the account has the correct permissions. To check if the database is created successfully, and to obtain the size of the spooled database(s) in order to make sure the temporary drive has enough space to accommodate the spooling of the database files during backups, run the following command.

```
C:\Users\Administrator>dir E:\Temp
Volume in drive E has no label.
Volume Serial Number is 16F4-EB51
Directory of E:\Temp
09/07/2020  11:18 AM    <DIR>          .
09/07/2020  11:18 AM    <DIR>          ..
09/07/2020  12:06 PM    1,075,228,160 adventureworks2016.bak
09/07/2020  11:18 AM           215,046,656 inventory.bak
09/04/2020  06:42 PM           4,024,832 master.bak
           3 File(s)  1,429,402,815 bytes
           2 Dir(s)  21,348,990,976 bytes free

C:\Users\Administrator>
```

Example Scenario: Trusted Authentication using Account with Incorrect Permissions

The following error message will be displayed when using a Windows login account which does not have the correct permissions to access the MS SQL database(s).

```
C:\Users\backup1>osql -E -Q "DECLARE @dbname char(64) SET @dbname
= 'adventureworks2016' BACKUP DATABASE @dbname TO DISK
='E:\temp\adventureworks2016.bak' WITH SKIP"
[ODBC Driver 13 for SQL Server]Named Pipes Provider: Could not
open a connection to SQL Server [2].
Login failed for user 'W2K16-MSSQL2K16\backup1'.
[ODBC Driver 13 for SQL Server]A network-related or instance-
specific error
has occurred while establishing a connection to SQL Server. Server
is not
found or not accessible. Check if instance name is correct and if
SQL Server
is configured to allow remote connections. For more information
see SQL Server
Books Online.

C:\Users\backup1>
```

On the example above, the user 'backup1' does not have the correct permissions. Therefore, a MS SQL Server connection cannot be established.

MS SQL Authentication

To verify if the login credentials for MS SQL Authentication have the correct permissions to access and spool your MS SQL Server database(s) for a backup job, it is recommended to use the following command:

```
osql -U USERNAME -P PASSWORD -Q "DECLARE @dbname char(64) SET @dbname = 'xxx' BACKUP DATABASE @dbname TO DISK = '%temporary_path%\%database_name.txt' WITH SKIP"
```

NOTE

1. %temporary_path% is the location of the temporary folder on the MS SQL Server backup set (e.g. E:\temp)
2. 'xxx' is the name of the database selected for backup
3. USERNAME is the username of the MS SQL Server account
4. PASSWORD is the password of the MS SQL Server account

Example Scenario: MS SQL Authentication using Account with Sufficient Permissions

1. Log in to Windows using a specific account (e.g. Administrator).
2. Open the command prompt.
3. Use the following osql command.

```
Microsoft Windows [Version 10.0.14393]
(c) 2016 Microsoft Corporation. All rights reserved.

C:\Users\Administrator>osql -U sa -P abc123$$ -Q "DECLARE @dbname
char(64) SET @dbname = 'master' BACKUP DATABASE @dbname TO DISK =
'E:\temp\master.bak' WITH SKIP"

Processed 480 pages for database 'master
', file 'master' on
file 2.

Processed 3 pages for database 'master
', file 'mastlog' on
file 2.

BACKUP DATABASE successfully processed 483 pages in 0.785 seconds
(4.802 MB/sec).

C:\Users\Administrator>
```

On the example above,

osql -U sa

'sa' is the default username of the MS SQL Server account

-P abc123\$\$

'abc123\$\$' is the password of the MS SQL Server account

@dbname = 'master'

'master' is the name of the database selected for backup

@dbname TO DISK = 'E:\temp\master.bak'

'E:\temp' is the temporary folder of the MS SQL Server backup set

- If the “master” database is successfully saved to the temporary folder (E:\Temp), then it is verified that the account has the correct permissions. To check if the database is created successfully, and to obtain the size of the spooled database(s) in order to make sure the temporary drive has enough space to accommodate the spooling of the database files during backups, run the following command.

```
C:\Users\Administrator>dir E:\Temp
Volume in drive E has no label.
Volume Serial Number is 16F4-EB51
Directory of E:\Temp
09/07/2020  11:18 AM    <DIR>          .
09/07/2020  11:18 AM    <DIR>          ..
09/07/2020  12:06 PM    1,075,228,160  adventureworks2016.bak
09/07/2020  11:18 AM    215,046,656   inventory.bak
09/04/2020  06:42 PM    4,024,832    master.bak
          3 File(s)  1,429,402,815 bytes
          2 Dir(s)  21,348,990,976 bytes free

C:\Users\Administrator>
```

Example Scenario: MS SQL Authentication using Account with Incorrect Permissions

The following error message will be displayed when using a MS SQL account which does not have the correct permissions to access the MS SQL database(s).

```
C:\Users\Administrator>osql -U mssql1 -P abc123$$ -Q "DECLARE
@dbname char(64) SET @dbname = 'master' BACKUP DATABASE @dbname TO
DISK = 'E:\temp\master.bak' WITH SKIP"
[ODBC Driver 13 for SQL Server]Named Pipes Provider: Could not
open a connection to SQL Server [2].
Login failed for user 'mssql1'.
[ODBC Driver 13 for SQL Server]A network-related or instance-
specific error
has occurred while establishing a connection to SQL Server. Server
is not
found or not accessible. Check if instance name is correct and if
SQL Server
is configured to allow remote connections. For more information
see SQL Server
Books Online.

C:\Users\Administrator>
```

On the example above, 'mssql1' is the username of the MS SQL Server account which does not have the correct permissions. Therefore, a MS SQL Server connection cannot be established.